

Jasper County, Iowa
Iowa South Zone (1402)
Horiz. Datum: NAD83(1996)
Vert. Datum: NAVD 1988
US Survey Feet
2005

Point Name: **I03**

Designation: Jasper County GPS Monument I03-2005

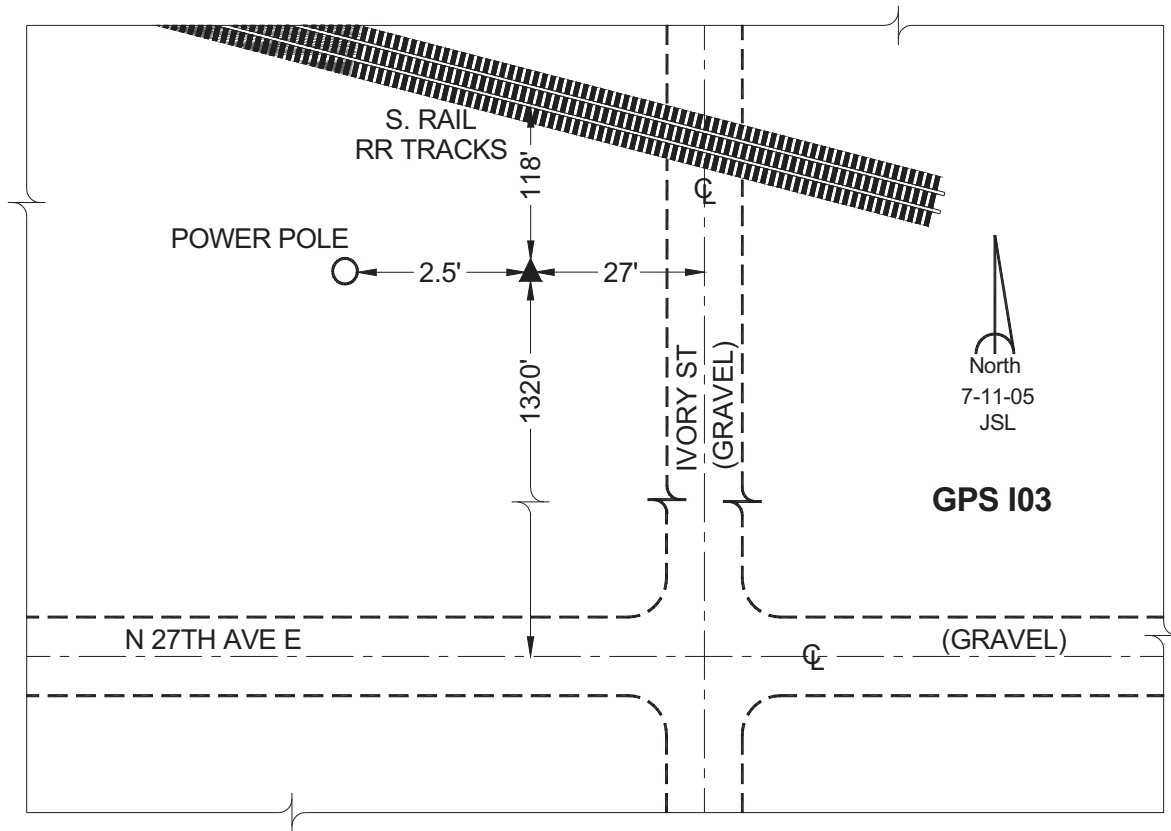
Northing: **630083.51sft** Easting: **1792845.84sft**

Orthometric Height: **900.50sft** Ellipsoid Height: **795.79sft** **Geoid03**

Latitude: **41°43'40.91252"** Longitude: **92°56'29.72016"**

Mapping Angle: **0°22'04"** Combination Scale Factor: **0.99995268**

Monument Type: Cast in-place concrete monument with aluminum disk.



This document was prepared by GBC and DCI for use by Jasper County, Iowa.