

Jasper County, Iowa
Iowa South Zone (1402)
Horiz. Datum: NAD83(1996)
Vert. Datum: NAVD 1988
US Survey Feet
2005

Point Name: **I04**

Designation: Jasper County GPS Monument I04-2005

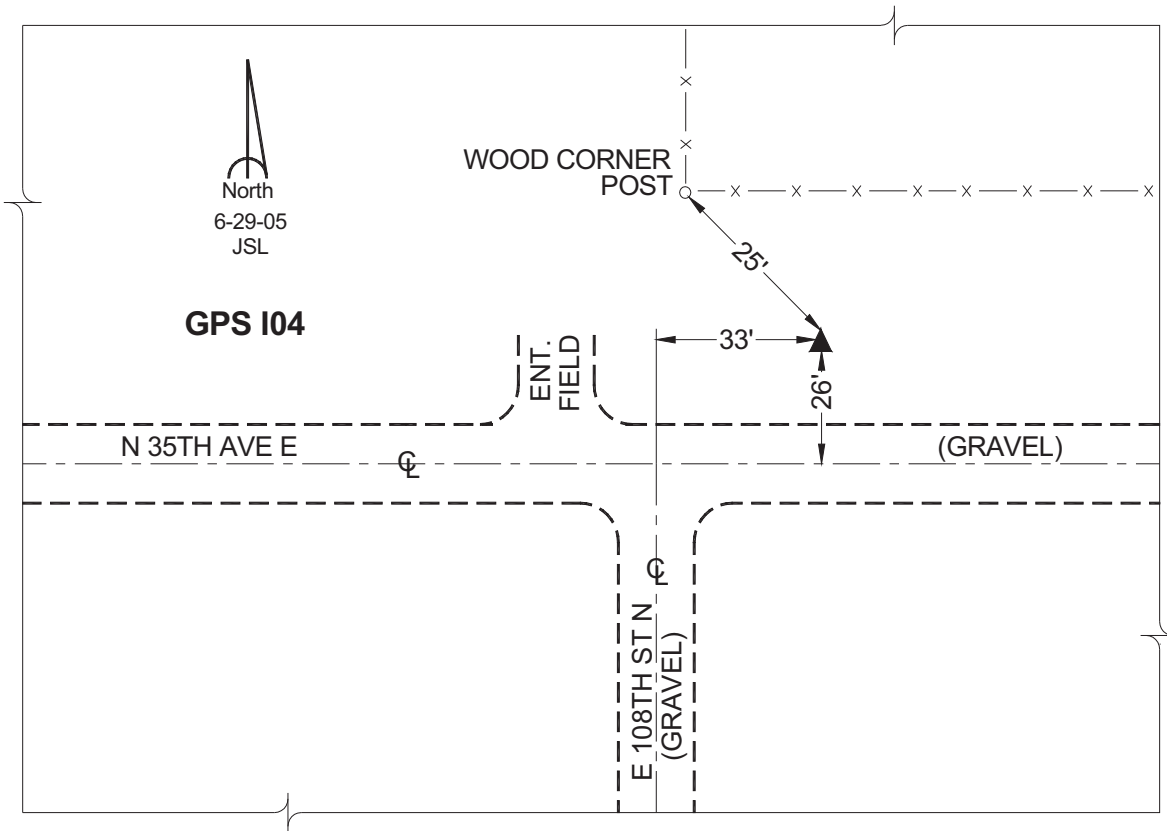
Northing: **631549.14sft** Easting: **1808713.43sft**

Orthometric Height: **895.53sft** Ellipsoid Height: **790.72sft** **Geoid03**

Latitude: **41°43'54.33303"** Longitude: **92°53'00.32347"**

Mapping Angle: **0°24'22"** Combination Scale Factor: **0.99995352**

Monument Type: Cast in-place concrete monument with aluminum disk.



This document was prepared by GBC and DCI for use by Jasper County, Iowa.