

Jasper County, Iowa
Iowa South Zone (1402)
Horiz. Datum: NAD83(1996)
Vert. Datum: NAVD 1988
US Survey Feet
2005

Point Name: **J01**

Designation: Jasper County GPS Monument J01-2005

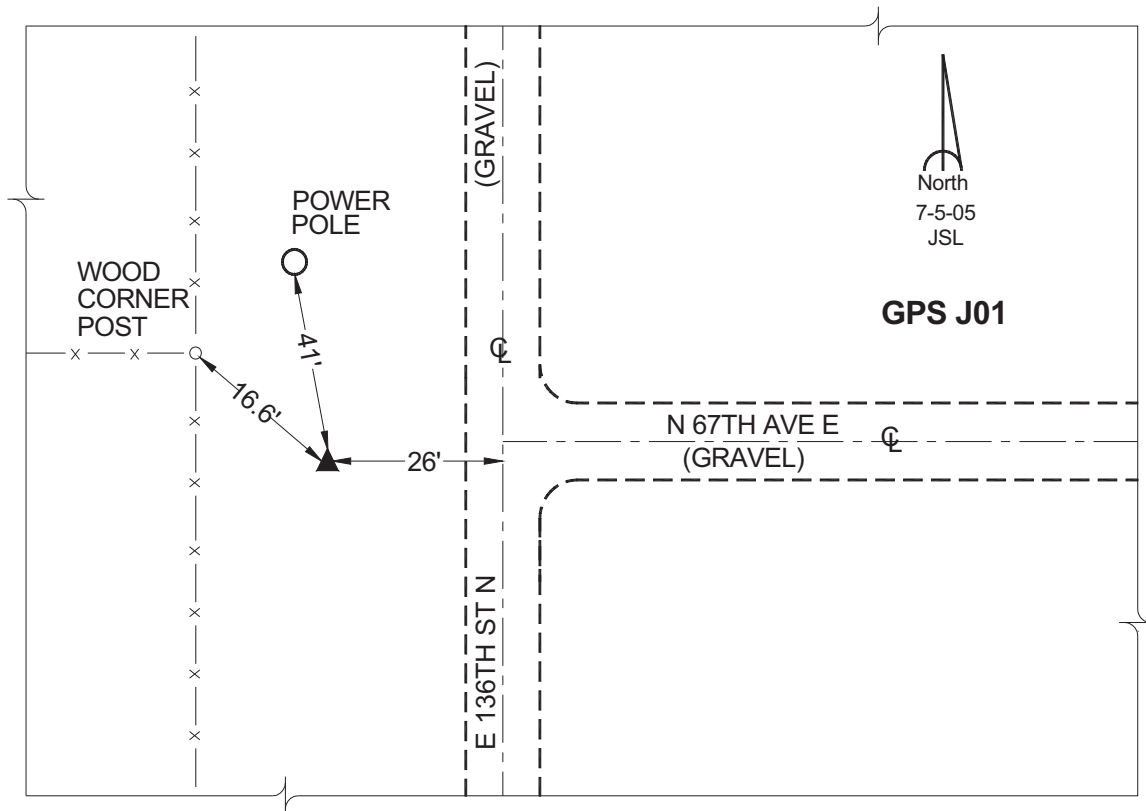
Northing: **647832.46sft** Easting: **1827349.37sft**

Orthometric Height: **991.34sft** Ellipsoid Height: **886.52sft** **Geoid03**

Latitude: **41°46'33.81984"** Longitude: **92°48'52.85063"**

Mapping Angle: **0°27'05"** Combination Scale Factor: **0.99995642**

Monument Type: Cast in-place concrete monument with aluminum disk.



This document was prepared by GBC and DCI for use by Jasper County, Iowa.