

Jasper County, Iowa
Iowa South Zone (1402)
Horiz. Datum: NAD83(1996)
Vert. Datum: NAVD 1988
US Survey Feet
2005

Point Name: **J02**

Designation: Jasper County GPS Monument J02-2005

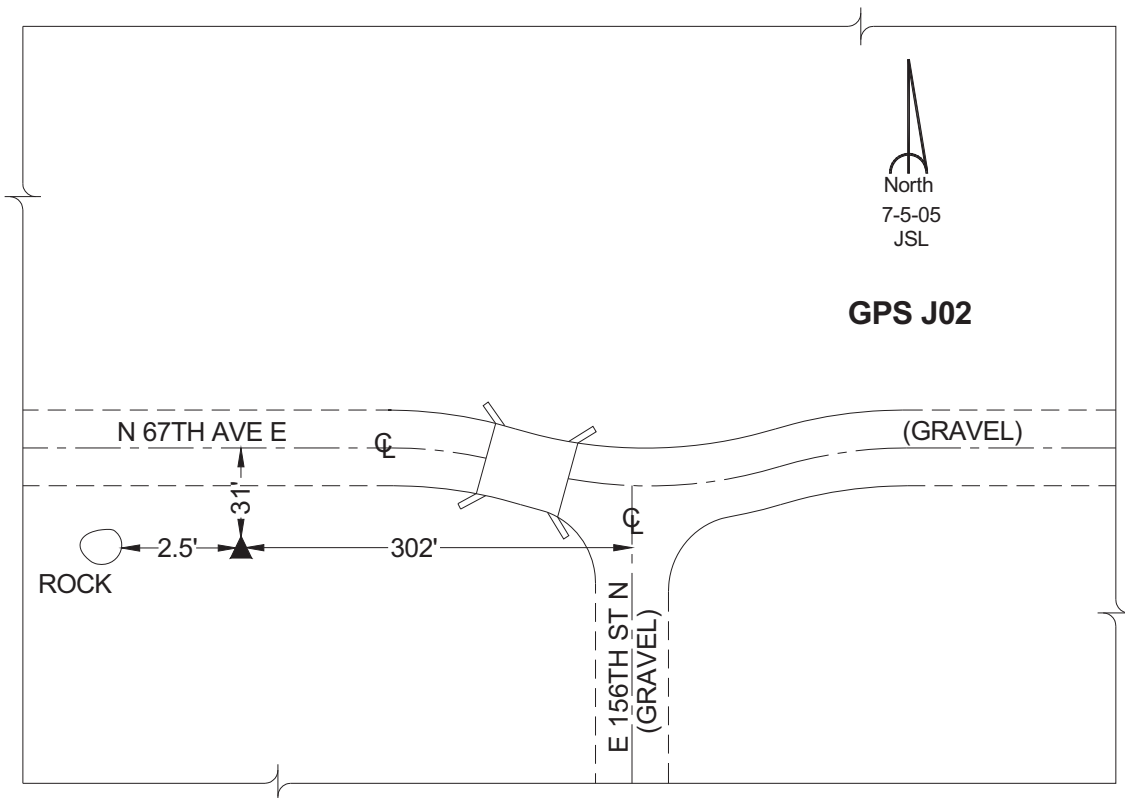
Northing: **647876.95sft** Easting: **1840295.09sft**

Orthometric Height: **918.48sft** Ellipsoid Height: **813.57sft** **Geoid03**

Latitude: **41°46'33.21678"** Longitude: **92°46'01.99501"**

Mapping Angle: **0°28'58"** Combination Scale Factor: **0.99995987**

Monument Type: Cast in-place concrete monument with aluminum disk.



This document was prepared by GBC and DCI for use by Jasper County, Iowa.