

Jasper County, Iowa
Iowa South Zone (1402)
Horiz. Datum: NAD83(1996)
Vert. Datum: NAVD 1988
US Survey Feet
2005

Point Name: **J03**

Designation: Jasper County GPS Monument J03-2005

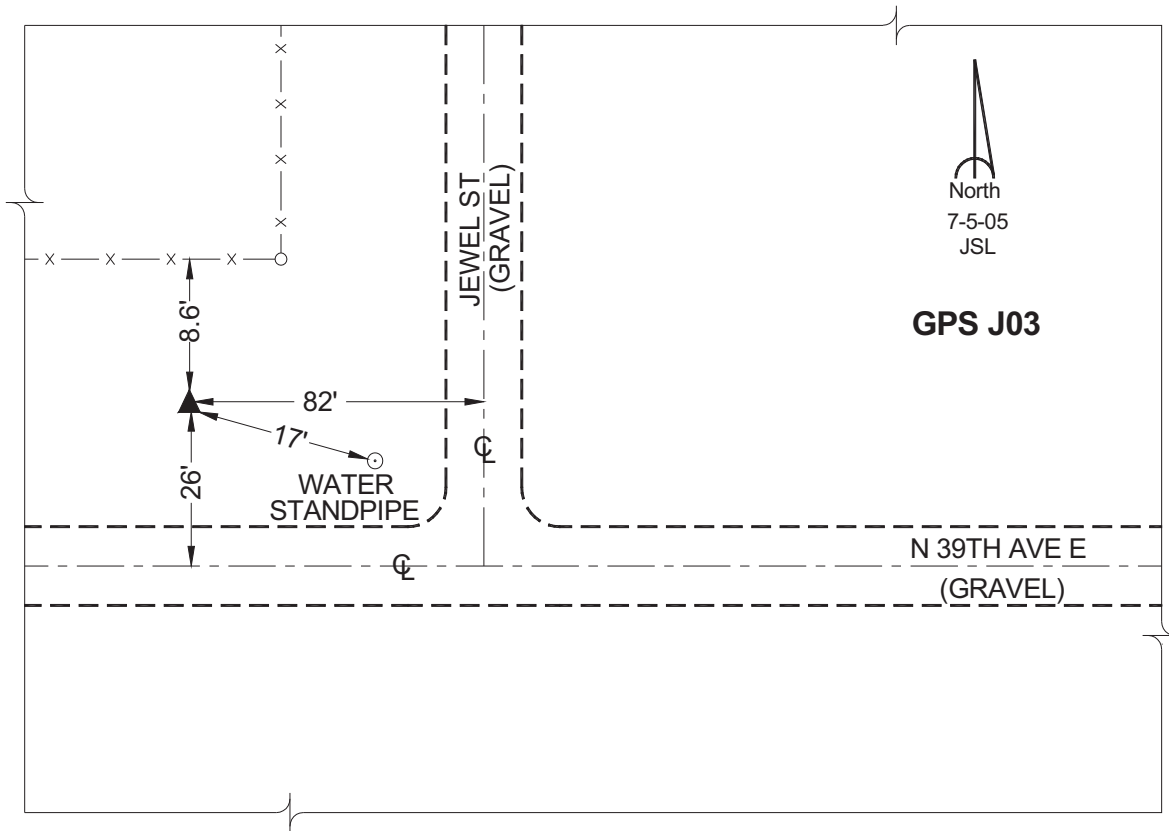
Northing: **632938.24sft** Easting: **1824689.62sft**

Orthometric Height: **985.32sft** Ellipsoid Height: **880.38sft** **Geoid03**

Latitude: **41°44'06.88427"** Longitude: **92°49'29.47845"**

Mapping Angle: **0°26'41"** Combination Scale Factor: **0.99994981**

Monument Type: Cast in-place concrete monument with aluminum disk.



This document was prepared by GBC and DCI for use by Jasper County, Iowa.