

Jasper County, Iowa
Iowa South Zone (1402)
Horiz. Datum: NAD83(1996)
Vert. Datum: NAVD 1988
US Survey Feet
2005

Point Name: **J04**

Designation: Jasper County GPS Monument J04-2005

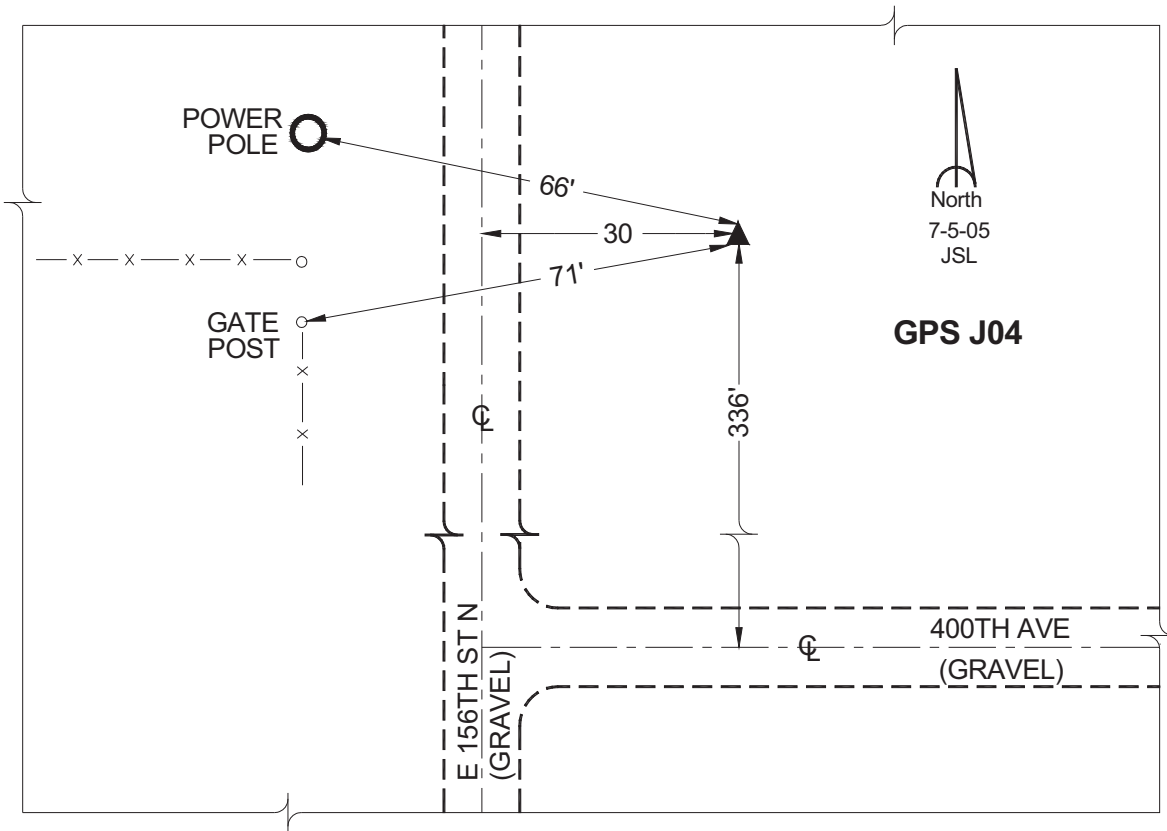
Northing: **626837.15sft** Easting: **1840726.07sft**

Orthometric Height: **928.27sft** Ellipsoid Height: **823.16sft** **Geoid03**

Latitude: **41°43'05.32764"** Longitude: **92°45'58.64943"**

Mapping Angle: **0°29'00"** Combination Scale Factor: **0.99994980**

Monument Type: Cast in-place concrete monument with aluminum disk.



This document was prepared by GBC and DCI for use by Jasper County, Iowa.