

**Jasper County, Iowa**  
Iowa South Zone (1402)  
Horiz. Datum: NAD83(1996)  
Vert. Datum: NAVD 1988  
US Survey Feet  
**2005**

Point Name: **K01**

**Designation:** Jasper County GPS Monument K01-2005

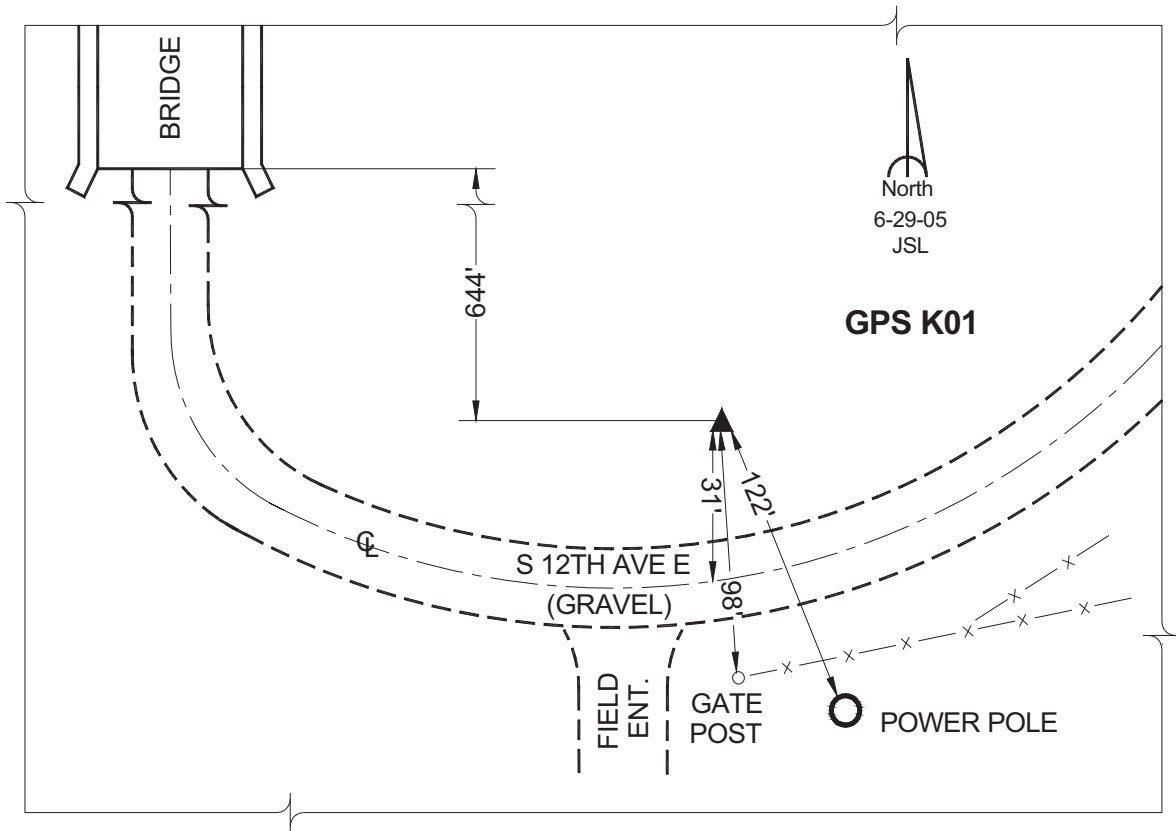
Northing: **614985.79sft**    Easting: **1809897.35sft**

Orthometric Height: **942.31sft**    Ellipsoid Height: **837.36sft**    **Geoid03**

Latitude: **41°41'10.61590"**    Longitude: **92°52'46.26752"**

Mapping Angle: **0°24'31"**    Combination Scale Factor: **0.99994425**

**Monument Type:** Cast in-place concrete monument with aluminum disk.



*This document was prepared by GBC and DCI for use by Jasper County, Iowa.*