

Jasper County, Iowa
Iowa South Zone (1402)
Horiz. Datum: NAD83(1996)
Vert. Datum: NAVD 1988
US Survey Feet
2005

Point Name: **K02**

Designation: Jasper County GPS Monument K02-2005

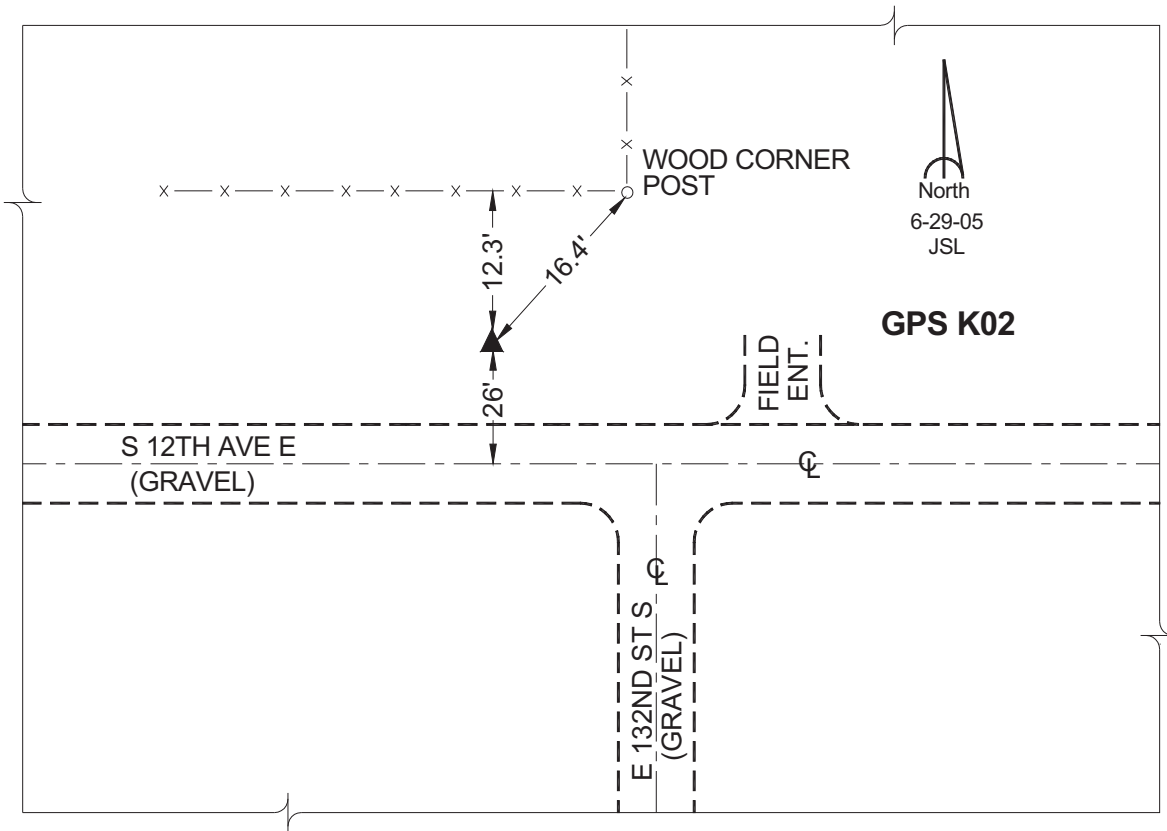
Northing: **615793.11sft** Easting: **1824940.19sft**

Orthometric Height: **936.75sft** Ellipsoid Height: **831.68sft** **Geoid03**

Latitude: **41°41'17.48453"** Longitude: **92°49'27.93004"**

Mapping Angle: **0°26'42"** Combination Scale Factor: **0.99994481**

Monument Type: Cast in-place concrete monument with aluminum disk.



This document was prepared by GBC and DCI for use by Jasper County, Iowa.