

Jasper County, Iowa
Iowa South Zone (1402)
Horiz. Datum: NAD83(1996)
Vert. Datum: NAVD 1988
US Survey Feet
2005

Point Name: **K03**

Designation: Jasper County GPS Monument K03-2005

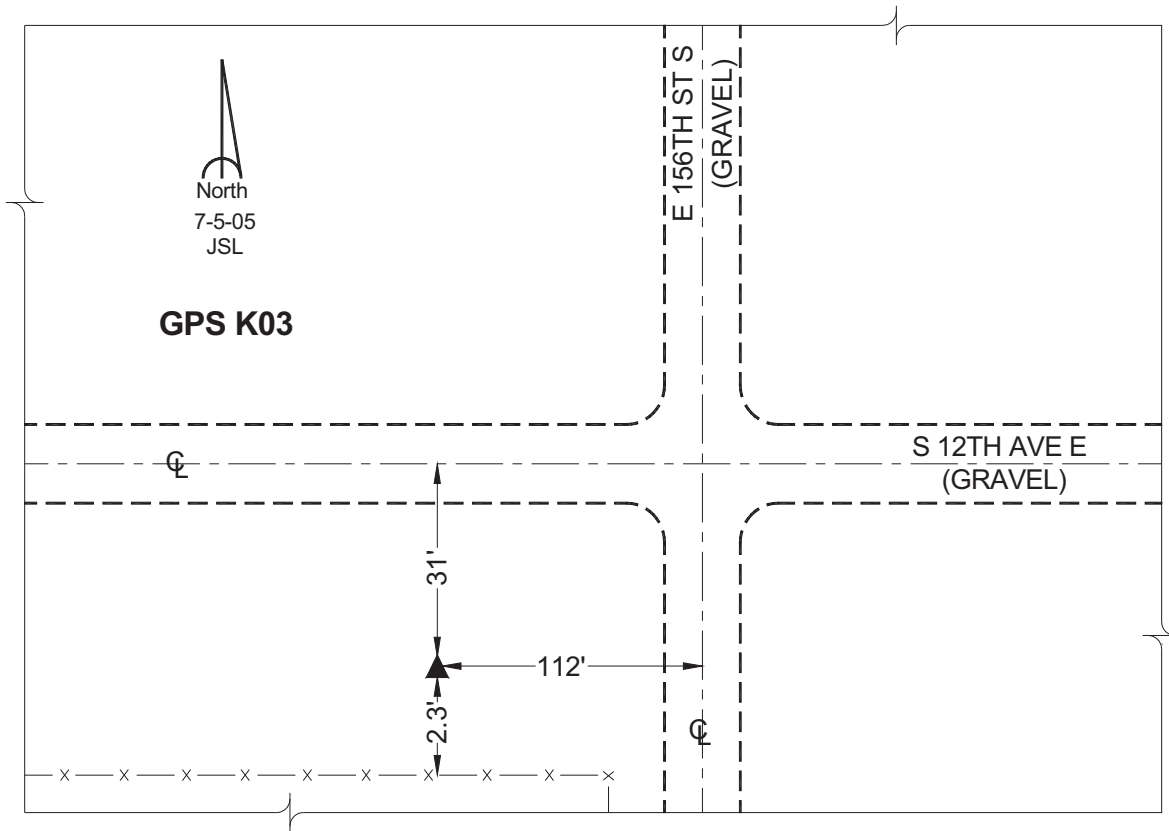
Northing: **615865.69sft** Easting: **1840669.77sft**

Orthometric Height: **883.41sft** Ellipsoid Height: **778.23sft** **Geoid03**

Latitude: **41°41'16.94318"** Longitude: **92°46'00.61129"**

Mapping Angle: **0°28'59"** Combination Scale Factor: **0.99994734**

Monument Type: Cast in-place concrete monument with aluminum disk.



This document was prepared by GBC and DCI for use by Jasper County, Iowa.