

**Jasper County, Iowa**  
Iowa South Zone (1402)  
Horiz. Datum: NAD83(1996)  
Vert. Datum: NAVD 1988  
US Survey Feet  
**2005**

Point Name: **K05**

**Designation:** Jasper County GPS Monument K05-2005

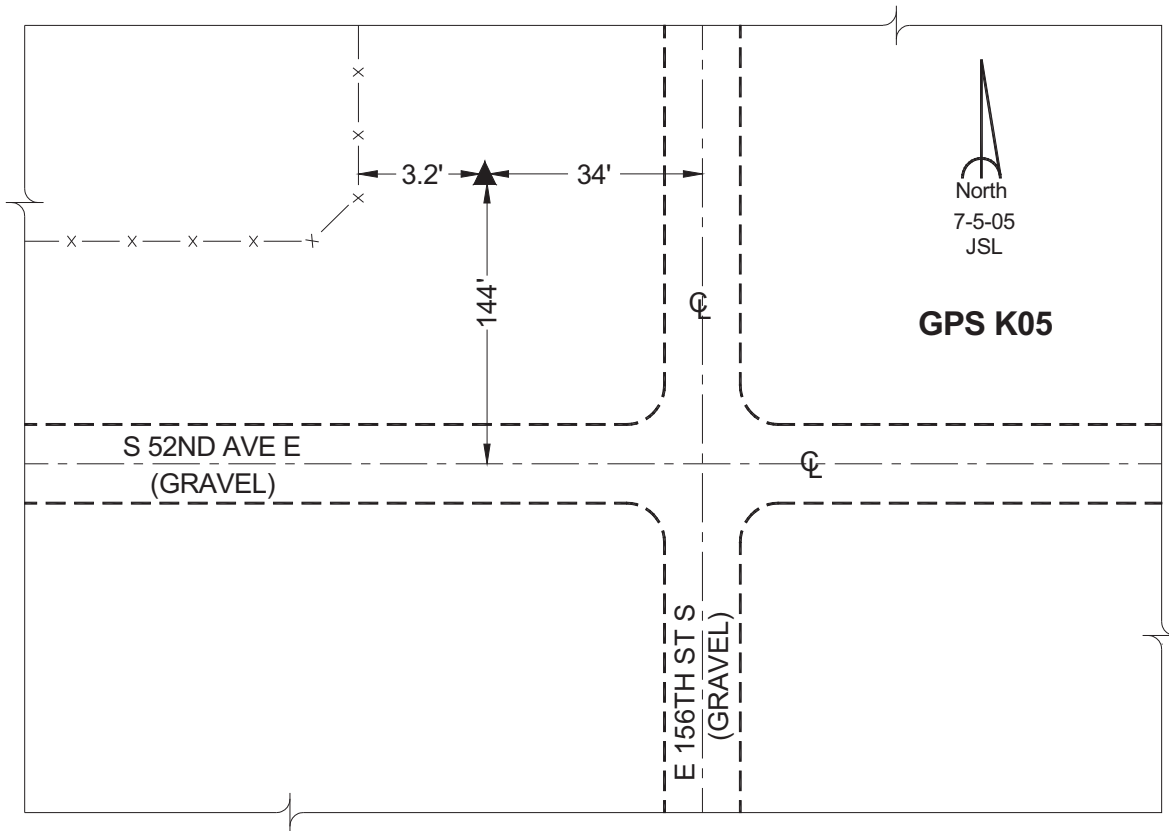
Northing: **600318.07sft**    Easting: **1840838.95sft**

Orthometric Height: **930.70sft**    Ellipsoid Height: **825.43sft**    **Geoid03**

Latitude: **41°38'43.32928"**    Longitude: **92°46'00.10903"**

Mapping Angle: **0°28'59"**    Combination Scale Factor: **0.99993903**

**Monument Type:** Cast in-place concrete monument with aluminum disk.



*This document was prepared by GBC and DCI for use by Jasper County, Iowa.*