

**Jasper County, Iowa**  
Iowa South Zone (1402)  
Horiz. Datum: NAD83(1996)  
Vert. Datum: NAVD 1988  
US Survey Feet  
**2005**

Point Name: **L01**

**Designation:** Jasper County GPS Monument L01-2005

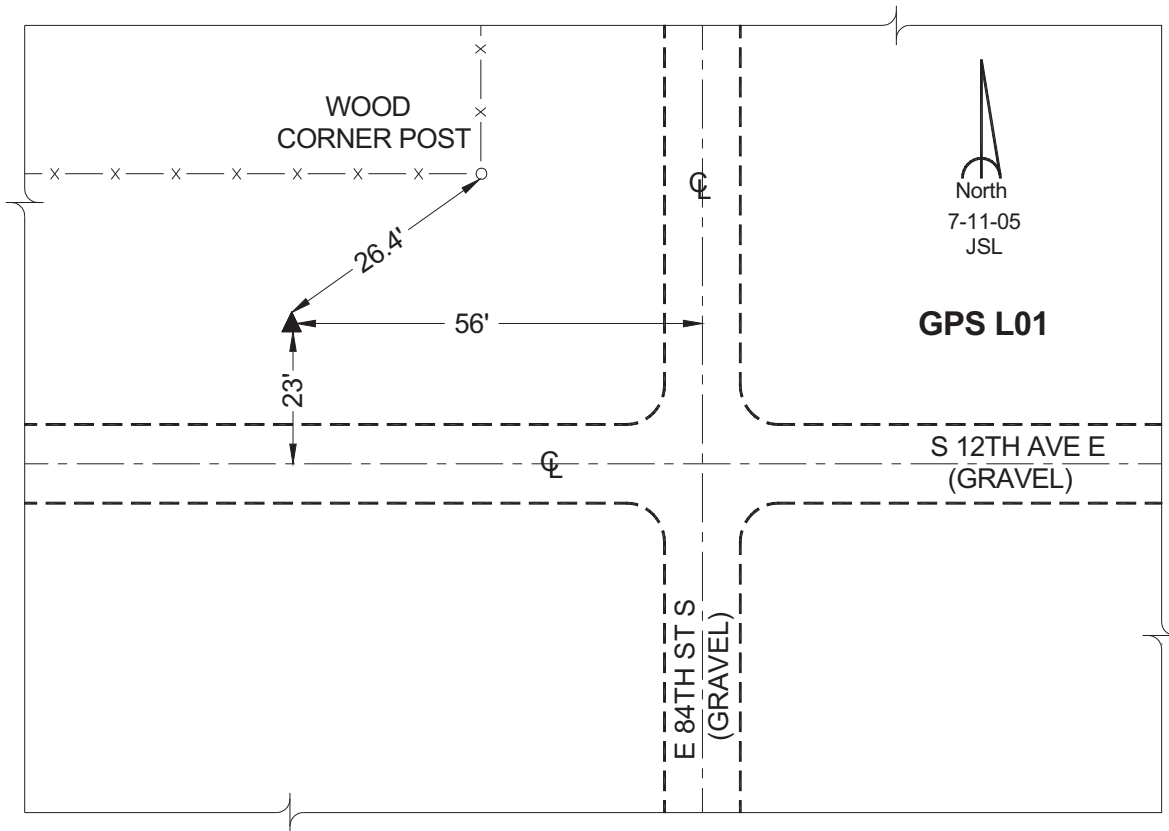
Northing: **615595.39sft**    Easting: **1792861.81sft**

Orthometric Height: **954.23sft**    Ellipsoid Height: **849.42sft**    **Geoid03**

Latitude: **41°41'17.77866"**    Longitude: **92°56'30.73564"**

Mapping Angle: **0°22'04"**    Combination Scale Factor: **0.99994397**

**Monument Type:** Cast in-place concrete monument with aluminum disk.



*This document was prepared by GBC and DCI for use by Jasper County, Iowa.*