

Jasper County, Iowa
Iowa South Zone (1402)
Horiz. Datum: NAD83(1996)
Vert. Datum: NAVD 1988
US Survey Feet
2005

Point Name: **L02**

Designation: Jasper County GPS Monument L02-2005

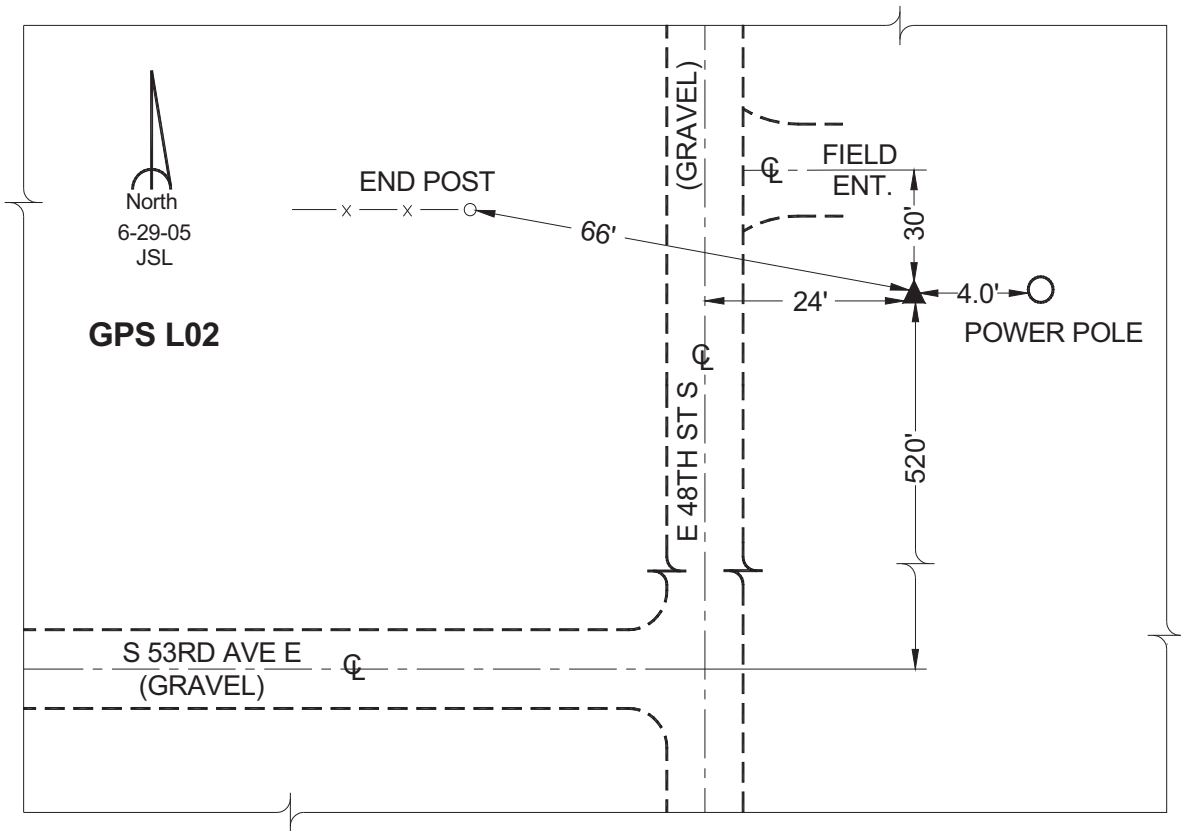
Northing: **599736.00sft** Easting: **1778569.17sft**

Orthometric Height: **938.33sft** Ellipsoid Height: **833.48sft** **Geoid03**

Latitude: **41°38'41.95942"** Longitude: **92°59'40.32637"**

Mapping Angle: **0°19'59"** Combination Scale Factor: **0.99993859**

Monument Type: Cast in-place concrete monument with aluminum disk.



This document was prepared by GBC and DCI for use by Jasper County, Iowa.