

Jasper County, Iowa
Iowa South Zone (1402)
Horiz. Datum: NAD83(1996)
Vert. Datum: NAVD 1988
US Survey Feet
2005

Point Name: **L04**

Designation: Jasper County GPS Monument L04-2005

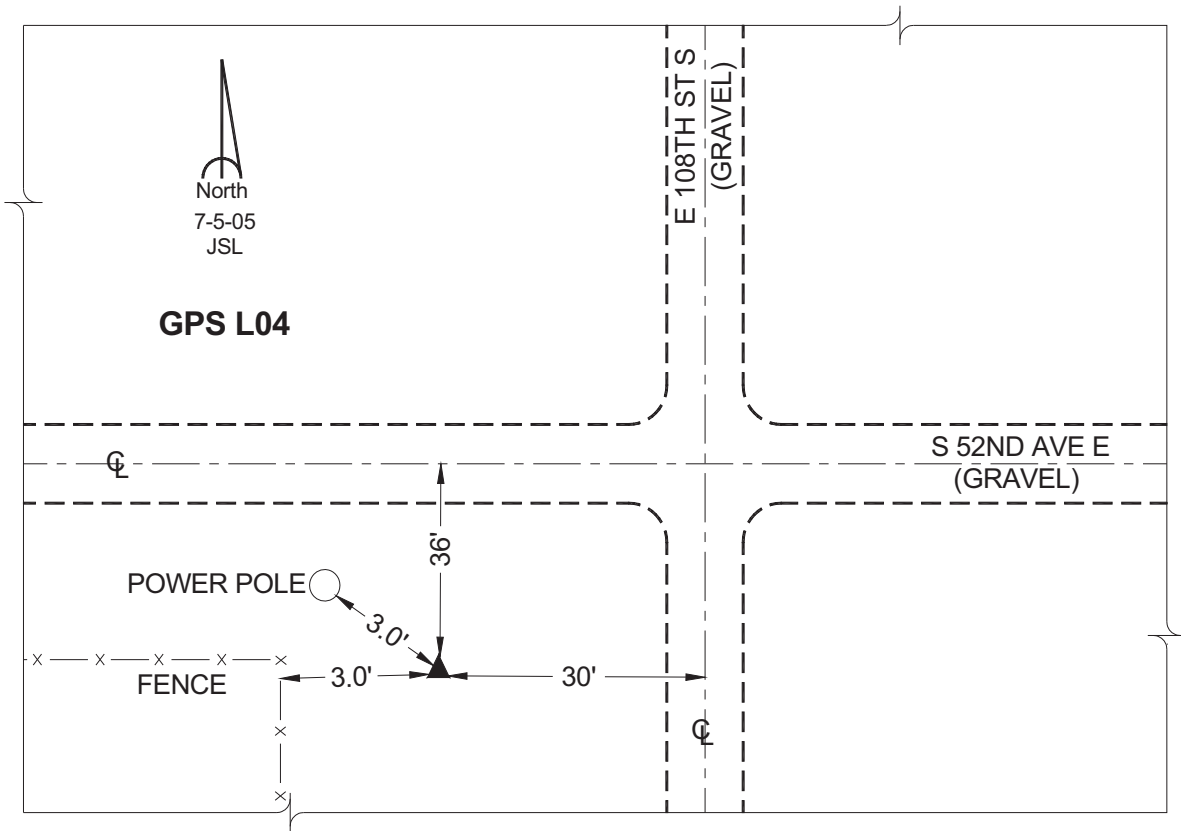
Northing: **600001.45sft** Easting: **1808878.47sft**

Orthometric Height: **919.04sft** Ellipsoid Height: **813.98sft** **Geoid03**

Latitude: **41°38'42.65099"** Longitude: **92°53'01.09519"**

Mapping Angle: **0°24'22"** Combination Scale Factor: **0.99993955**

Monument Type: Cast in-place concrete monument with aluminum disk.



This document was prepared by GBC and DCI for use by Jasper County, Iowa.