

Jasper County, Iowa
Iowa South Zone (1402)
Horiz. Datum: NAD83(1996)
Vert. Datum: NAVD 1988
US Survey Feet
2005

Point Name: **M02**

Designation: Jasper County GPS Monument M02-2005

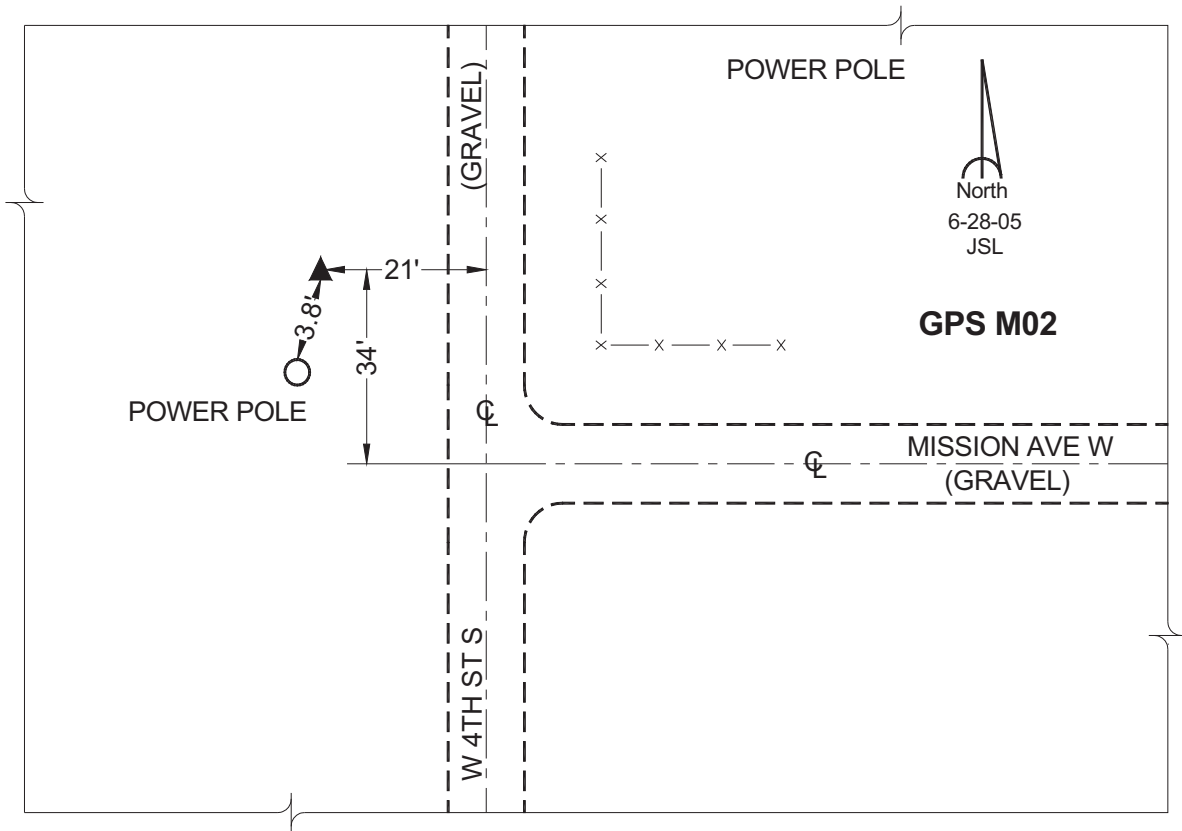
Northing: **599320.24sft** Easting: **1761227.08sft**

Orthometric Height: **861.57sft** Ellipsoid Height: **756.80sft** **Geoid03**

Latitude: **41°38'38.78510"** Longitude: **93°03'28.77108"**

Mapping Angle: **0°17'28"** Combination Scale Factor: **0.99994213**

Monument Type: Cast in-place concrete monument with aluminum disk.



This document was prepared by GBC and DCI for use by Jasper County, Iowa.