

Jasper County, Iowa
Iowa South Zone (1402)
Horiz. Datum: NAD83(1996)
Vert. Datum: NAVD 1988
US Survey Feet
2005

Point Name: **MC 98-108**

Designation: Marshall Co. GPS Control Pt. 98-108, set by ASI in 1998

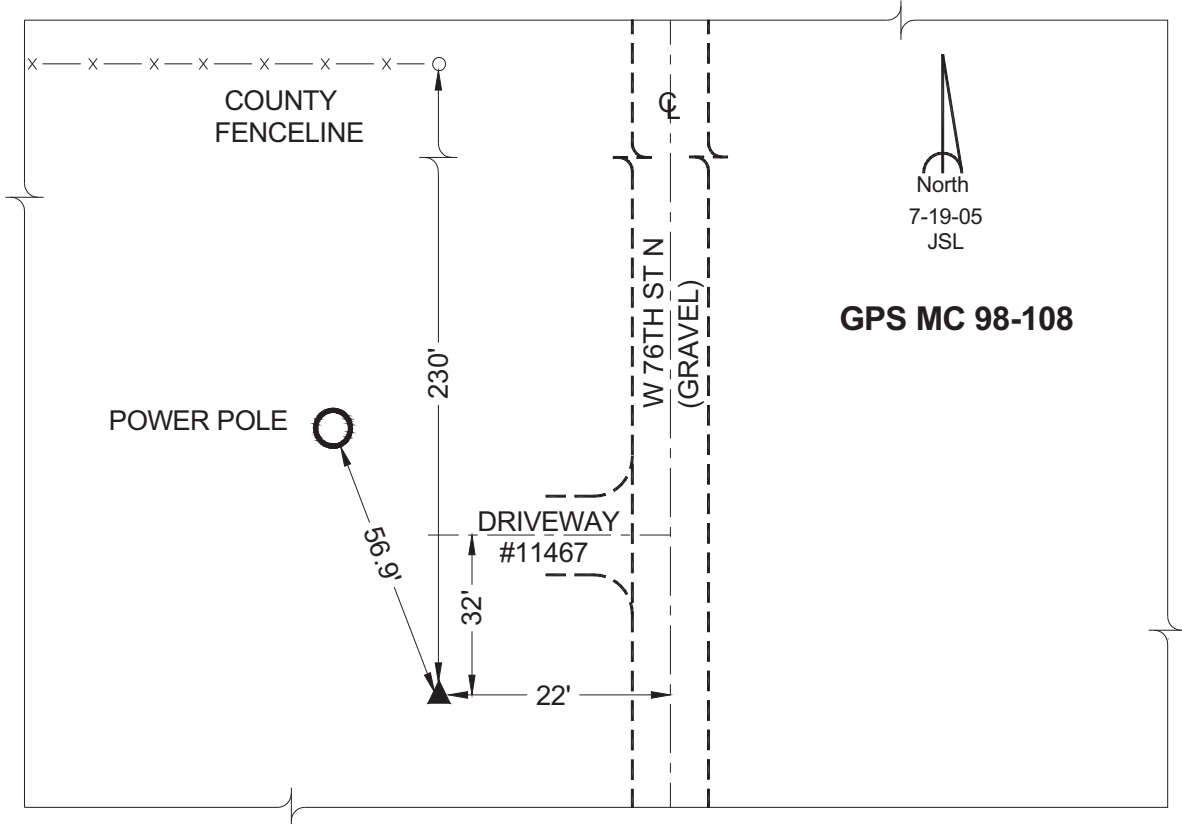
Northing: **678610.81sft** Easting: **1729174.96sft**

Orthometric Height: **982.88sft** Ellipsoid Height: **879.44sft** **Geoid03**

Latitude: **41°51'43.51650"** Longitude: **93°10'27.02212"**

Mapping Angle: **0°12'53"** Combination Scale Factor: **0.99997297**

Monument Type: Berntsen Top Security Rod Monument encased in a 5"dia. PVC pipe with an aluminum access cover.



This document was prepared by GBC and DCI for use by Jasper County, Iowa.