

**Jasper County, Iowa**  
Iowa South Zone (1402)  
Horiz. Datum: NAD83(1996)  
Vert. Datum: NAVD 1988  
US Survey Feet  
**2005**

Point Name: **MC 98-116**

**Designation:** Marshall Co. GPS Control Pt. 98-116, set by ASI in 1998

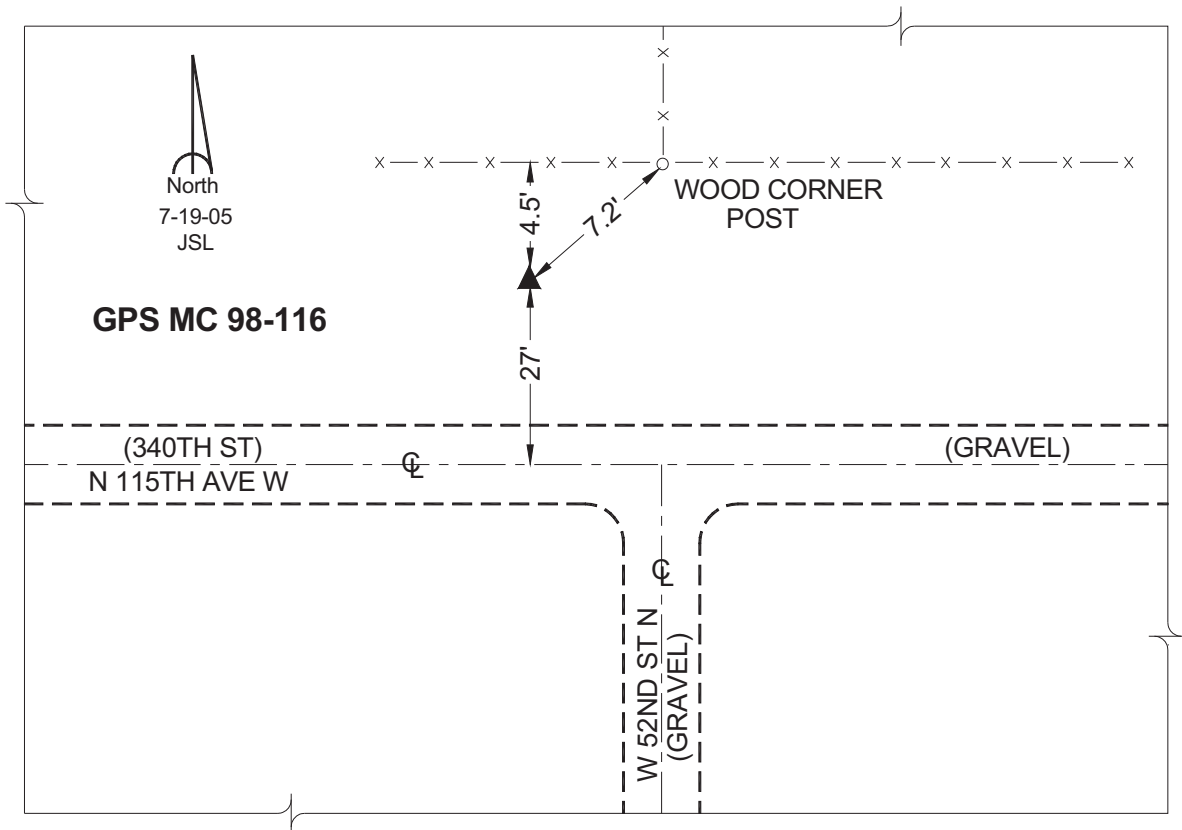
Northing: **678908.35sft**    Easting: **1744970.95sft**

Orthometric Height: **951.38sft**    Ellipsoid Height: **847.65sft**    **Geoid03**

Latitude: **41°51'45.81931"**    Longitude: **93°06'58.25668"**

Mapping Angle: **0°15'10"**    Combination Scale Factor: **0.99997462**

**Monument Type:** Berntsen Top Security Rod Monument encased in a 5"dia. PVC pipe with an aluminum access cover.



*This document was prepared by GBC and DCI for use by Jasper County, Iowa.*