

Jasper County, Iowa
 Iowa South Zone (1402)
 Horiz. Datum: NAD83(1996)
 Vert. Datum: NAVD 1988
 US Survey Feet
2005

Point Name: **MC 98-124**

Designation: Marshall Co. GPS Control Pt. 98-124, set by ASI in 1998

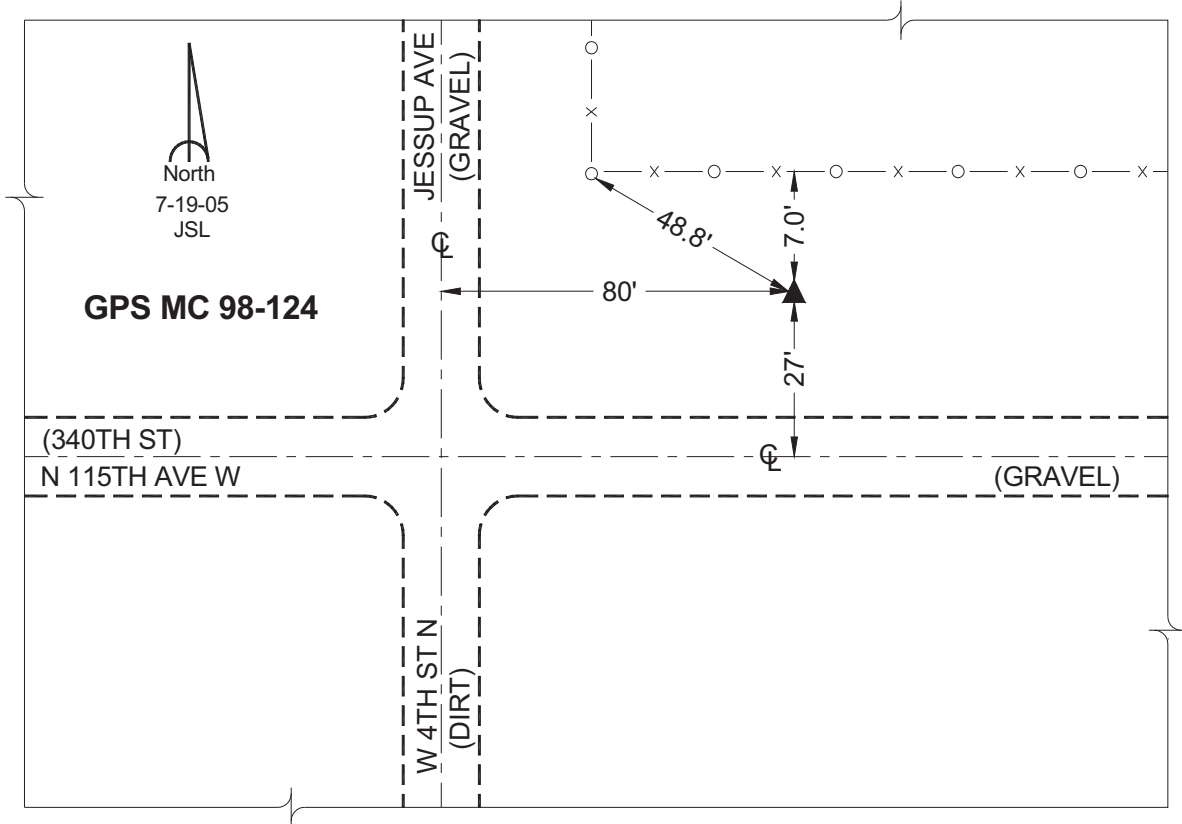
Northing: **678975.15sft** Easting: **1760908.05sft**

Orthometric Height: **912.26sft** Ellipsoid Height: **808.29sft** **Geoid03**

Latitude: **41°51'45.73155"** Longitude: **93°03'27.63789"**

Mapping Angle: **0°17'29"** Combination Scale Factor: **0.99997649**

Monument Type: Berntsen Top Security Rod Monument encased in a 5"dia. PVC pipe with an aluminum access cover.



This document was prepared by GBC and DCI for use by Jasper County, Iowa.