

Jasper County, Iowa
Iowa South Zone (1402)
Horiz. Datum: NAD83(1996)
Vert. Datum: NAVD 1988
US Survey Feet
2005

Point Name: **MC 98-132**

Designation: Marshall Co. GPS Control Pt. 98-132, set by ASI in 1998

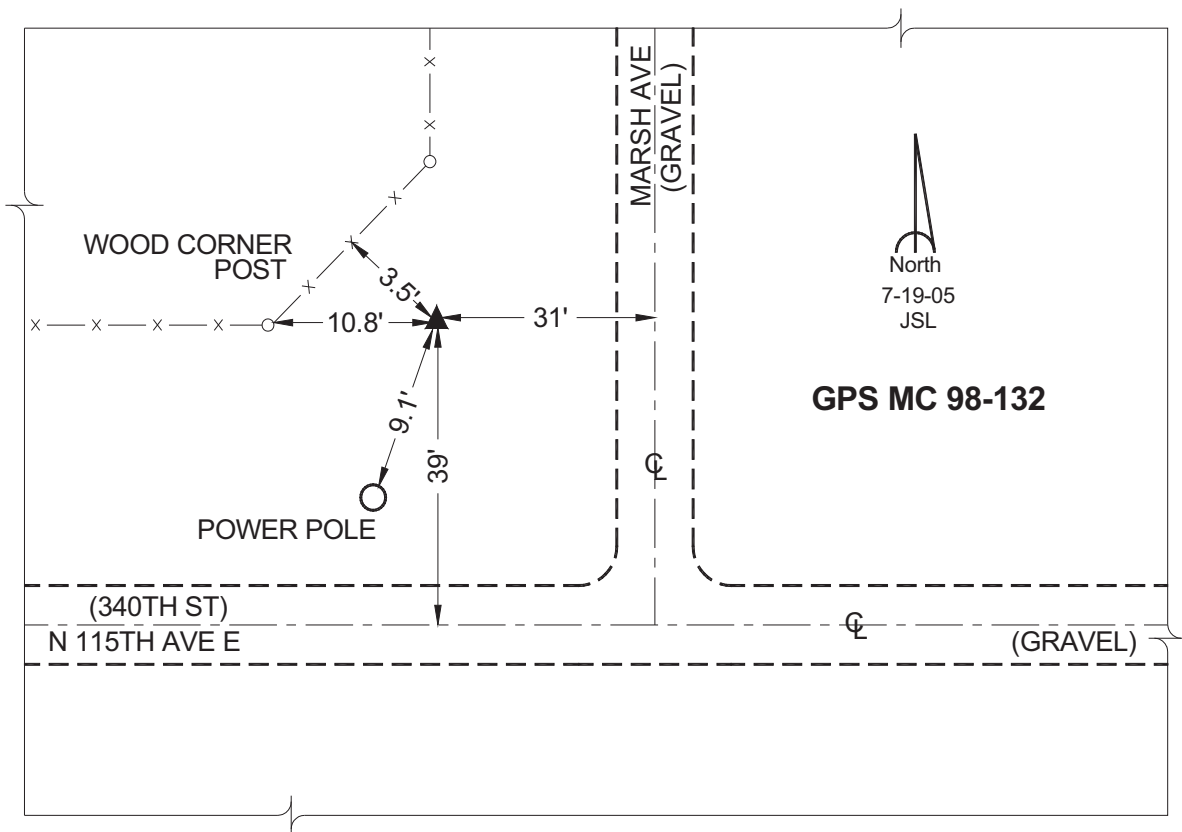
Northing: **679021.41sft** Easting: **1776664.81sft**

Orthometric Height: **976.79sft** Ellipsoid Height: **872.70sft** **Geoid03**

Latitude: **41°51'45.34524"** Longitude: **92°59'59.40416"**

Mapping Angle: **0°19'46"** Combination Scale Factor: **0.99997340**

Monument Type: Berntsen Top Security Rod Monument encased in a 5"dia. PVC pipe with an aluminum access cover.



This document was prepared by GBC and DCI for use by Jasper County, Iowa.