

Jasper County, Iowa
 Iowa South Zone (1402)
 Horiz. Datum: NAD83(1996)
 Vert. Datum: NAVD 1988
 US Survey Feet
2005

Point Name: **MC 98-139**

Designation: Marshall Co. GPS Control Pt. 98-139, set by ASI in 1998

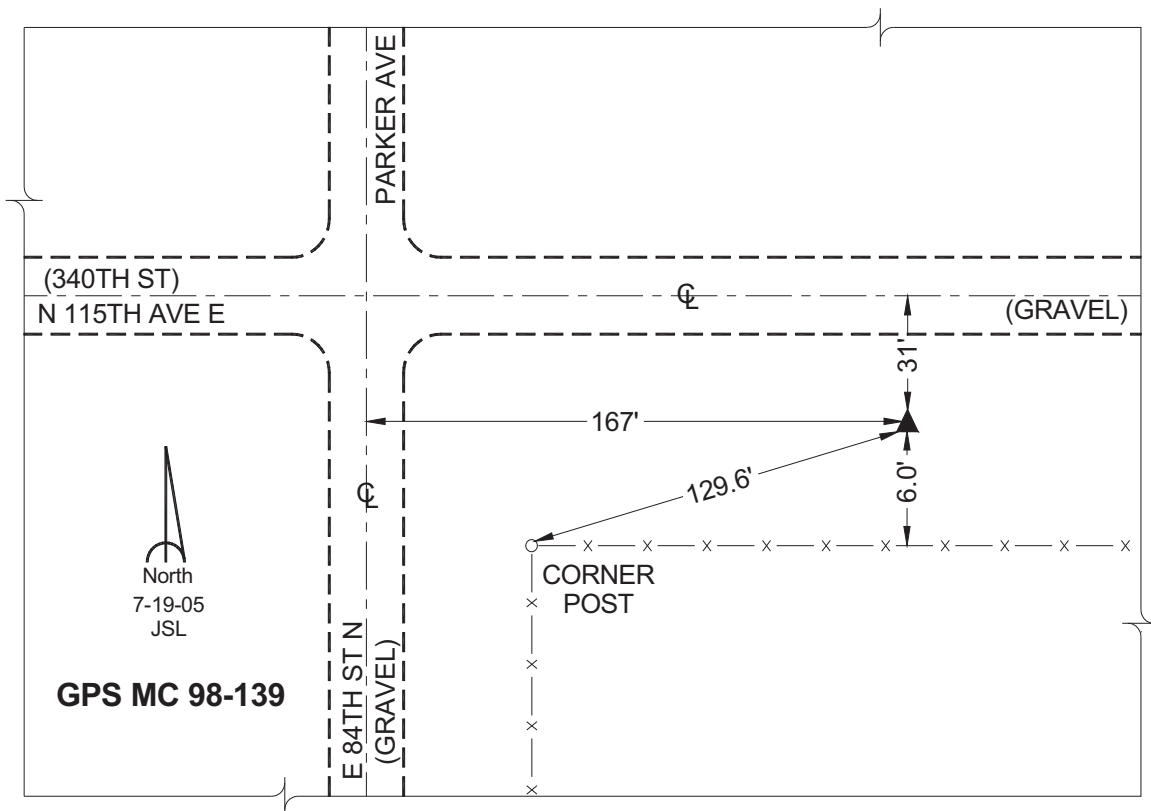
Northing: **679057.07sft** Easting: **1792714.18sft**

Orthometric Height: **939.95sft** Ellipsoid Height: **835.71sft** **Geoid03**

Latitude: **41°51'44.73213"** Longitude: **92°56'27.30522"**

Mapping Angle: **0°22'06"** Combination Scale Factor: **0.99997513**

Monument Type: Berntsen Top Security Rod Monument encased in a 5"dia. PVC pipe with an aluminum access cover.



This document was prepared by GBC and DCI for use by Jasper County, Iowa.