

Jasper County, Iowa
Iowa South Zone (1402)
Horiz. Datum: NAD83(1996)
Vert. Datum: NAVD 1988
US Survey Feet
2005

Point Name: **MC 98-146**

Designation: Marshall Co. GPS Control Pt. 98-146, set by ASI in 1998

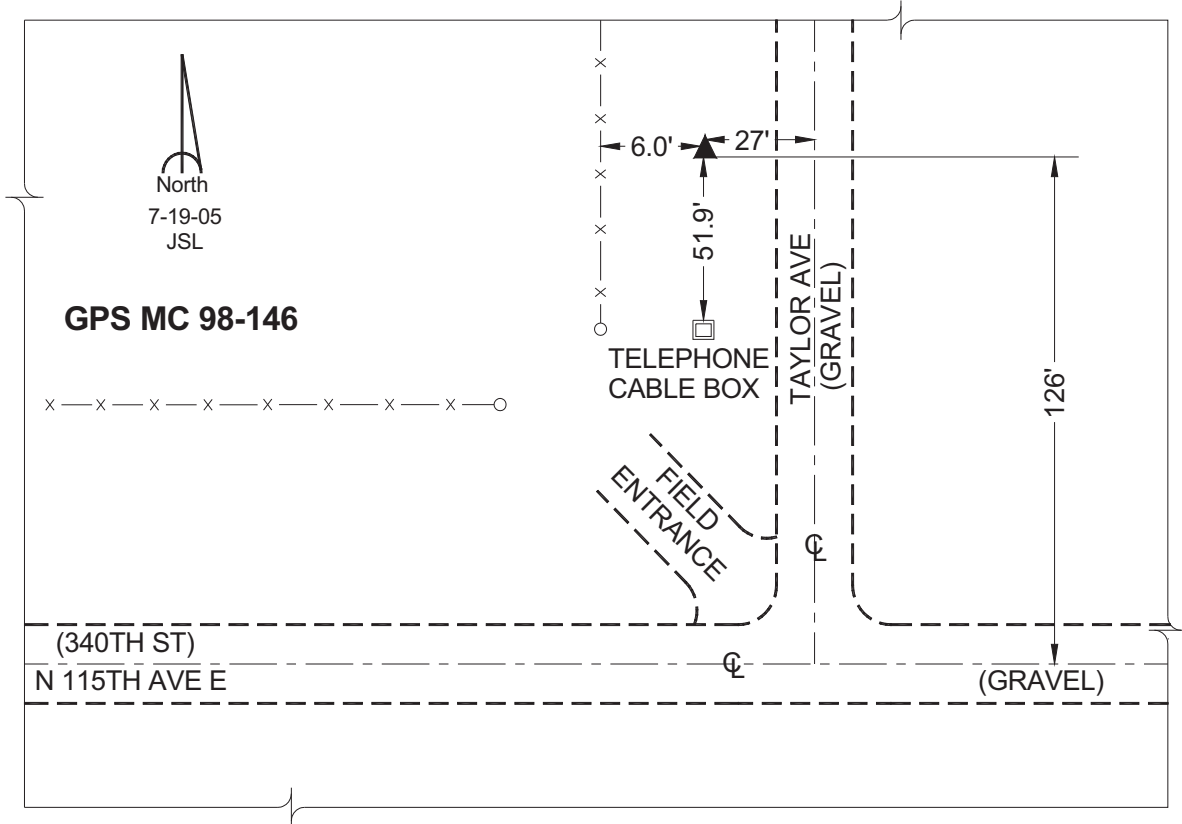
Northing: **679265.39sft** Easting: **1808396.06sft**

Orthometric Height: **1011.77sft** Ellipsoid Height: **907.43sft** **Geoid03**

Latitude: **41°51'45.74306"** Longitude: **92°53'00.04771"**

Mapping Angle: **0°24'22"** Combination Scale Factor: **0.99997176**

Monument Type: Berntsen Top Security Rod Monument encased in a 5"dia. PVC pipe with an aluminum access cover.



This document was prepared by GBC and DCI for use by Jasper County, Iowa.