

Jasper County, Iowa
Iowa South Zone (1402)
Horiz. Datum: NAD83(1996)
Vert. Datum: NAVD 1988
US Survey Feet
2005

Point Name: **MC 98-154**

Designation: Marshall Co. GPS Control Pt. 98-154, set by ASI in 1998

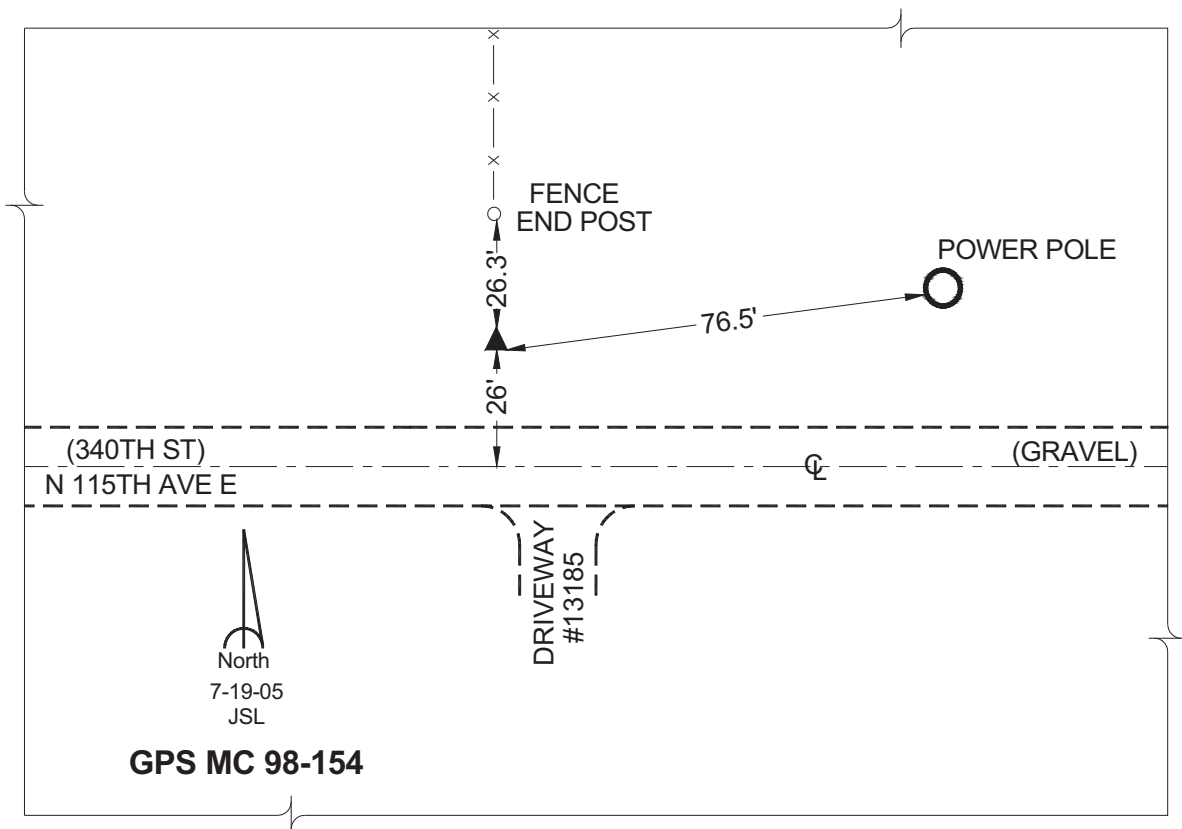
Northing: **679252.42sft** Easting: **1824507.57sft**

Orthometric Height: **1023.64sft** Ellipsoid Height: **919.10sft** **Geoid03**

Latitude: **41°51'44.43245"** Longitude: **92°49'27.13360"**

Mapping Angle: **0°26'43"** Combination Scale Factor: **0.99997113**

Monument Type: Berntsen Top Security Rod Monument encased in a 5"dia. PVC pipe with an aluminum access cover.



This document was prepared by GBC and DCI for use by Jasper County, Iowa.