

**Jasper County, Iowa**  
Iowa South Zone (1402)  
Horiz. Datum: NAD83(1996)  
Vert. Datum: NAVD 1988  
US Survey Feet  
**2005**

Point Name: **MC 98-162**

**Designation:** Marshall Co. GPS Control Pt. 98-162, set by ASI in 1998

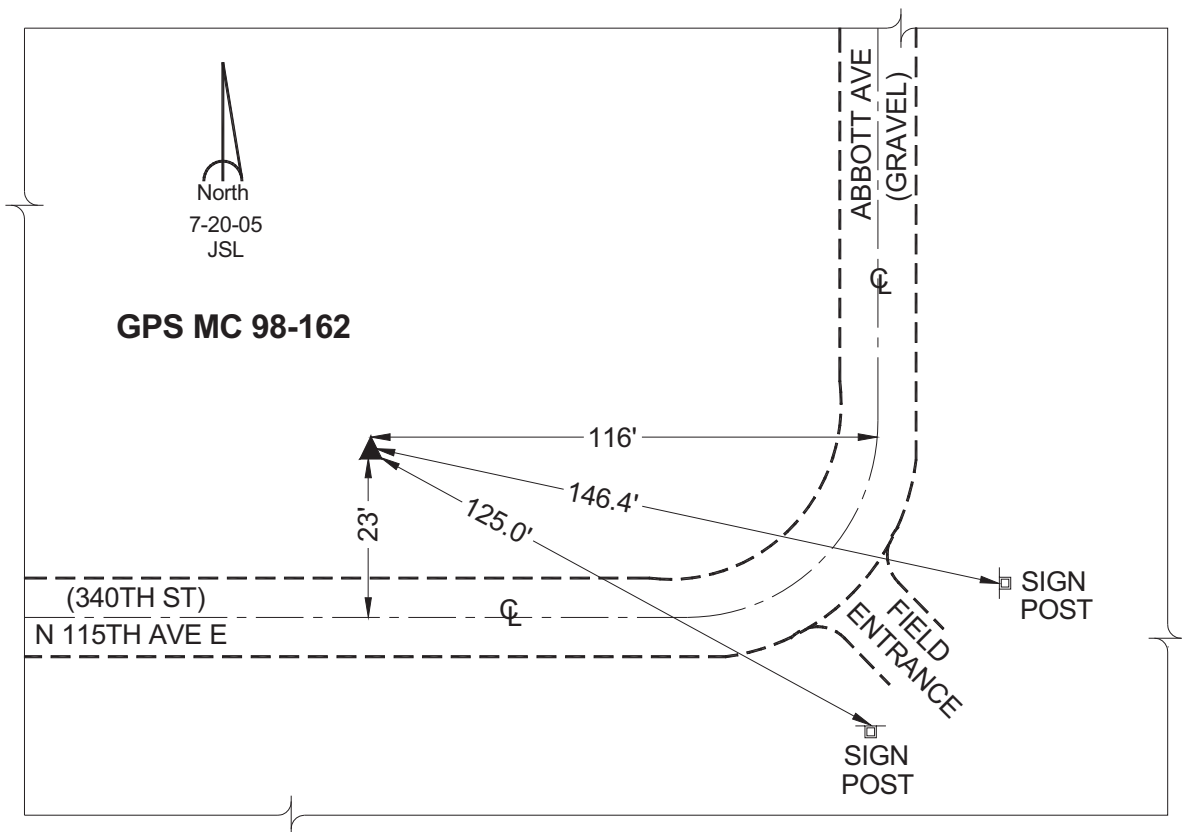
Northing: **679413.82sft**    Easting: **1840265.75sft**

Orthometric Height: **992.80sft**    Ellipsoid Height: **888.23sft**    **Geoid03**

Latitude: **41°51'44.76563"**    Longitude: **92°45'58.87175"**

Mapping Angle: **0°29'00"**    Combination Scale Factor: **0.99997262**

**Monument Type:** Berntsen Top Security Rod Monument encased in a 5"dia. PVC pipe with an aluminum access cover.



*This document was prepared by GBC and DCI for use by Jasper County, Iowa.*