

Jasper County, Iowa
Iowa South Zone (1402)
Horiz. Datum: NAD83(1996)
Vert. Datum: NAVD 1988
US Survey Feet
2005

Point Name: **N01**

Designation: Jasper County GPS Monument N01-2005

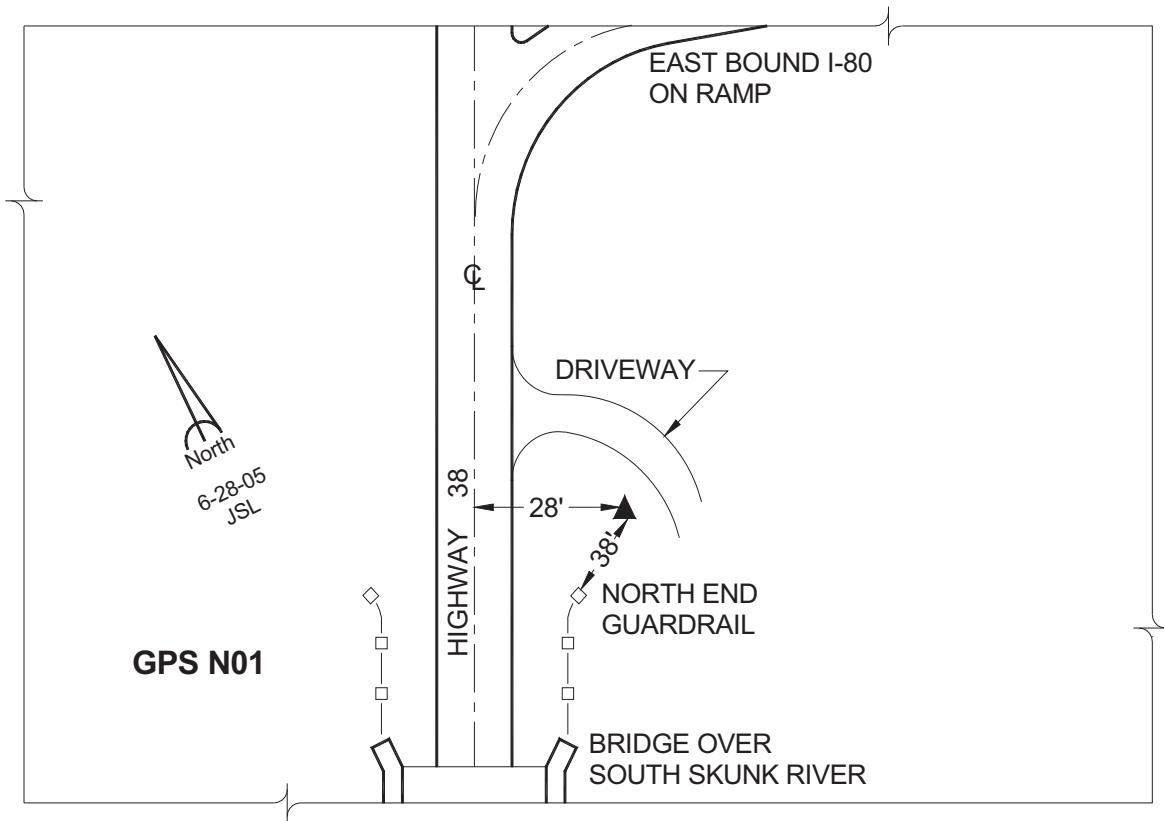
Northing: **615173.37sft** Easting: **1727271.29sft**

Orthometric Height: **790.46sft** Ellipsoid Height: **686.05sft** **Geoid03**

Latitude: **41°41'16.87273"** Longitude: **93°10'55.24452"**

Mapping Angle: **0°12'34"** Combination Scale Factor: **0.99995173**

Monument Type: Cast in-place concrete monument with aluminum disk.



This document was prepared by GBC and DCI for use by Jasper County, Iowa.