

Jasper County, Iowa
Iowa South Zone (1402)
Horiz. Datum: NAD83(1996)
Vert. Datum: NAVD 1988
US Survey Feet
2005

Point Name: **N02**

Designation: Jasper County GPS Monument N02-2005

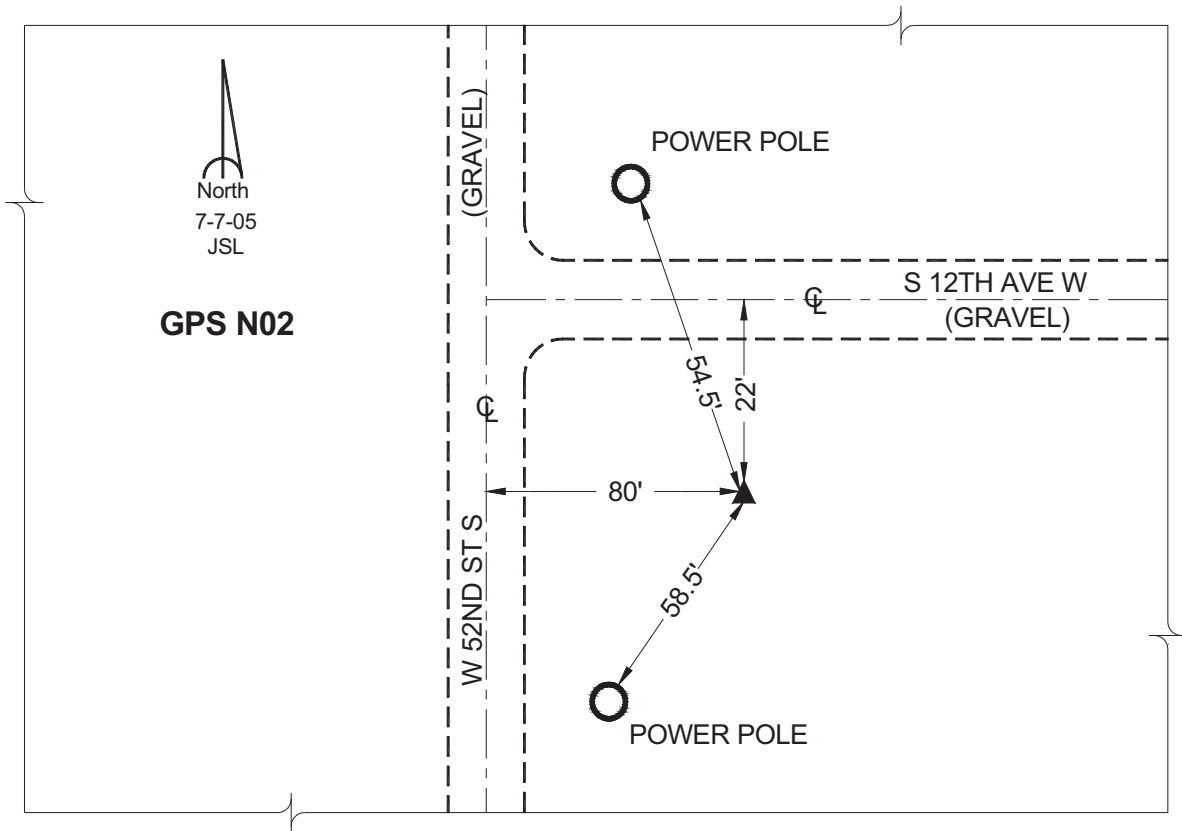
Northing: **615298.67sft** Easting: **1745315.62sft**

Orthometric Height: **910.53sft** Ellipsoid Height: **805.97sft** **Geoid03**

Latitude: **41°41'17.39125"** Longitude: **93°06'57.41337"**

Mapping Angle: **0°15'11"** Combination Scale Factor: **0.99994603**

Monument Type: Cast in-place concrete monument with aluminum disk.



This document was prepared by GBC and DCI for use by Jasper County, Iowa.