

Jasper County, Iowa
Iowa South Zone (1402)
Horiz. Datum: NAD83(1996)
Vert. Datum: NAVD 1988
US Survey Feet
2005

Point Name: **N03**

Designation: Jasper County GPS Monument N03-2005

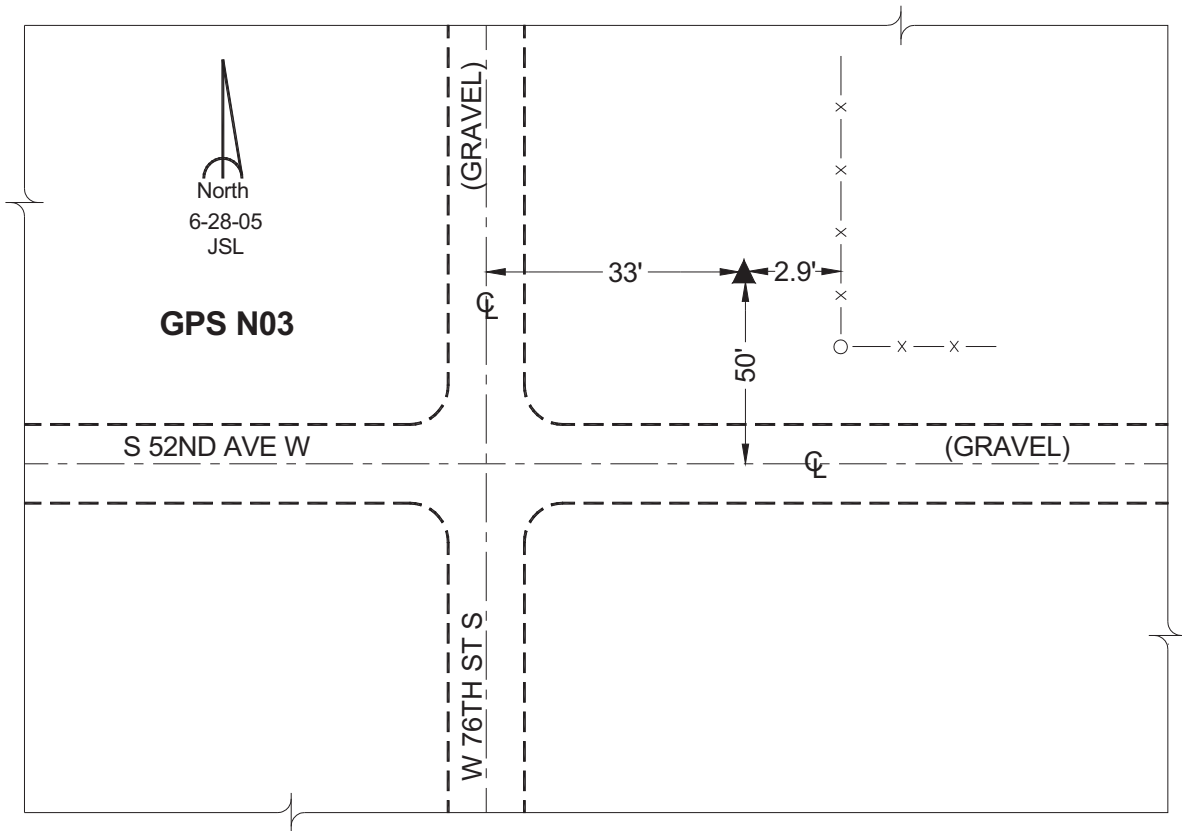
Northing: **599361.39sft** Easting: **1729426.79sft**

Orthometric Height: **832.96sft** Ellipsoid Height: **728.43sft** **Geoid03**

Latitude: **41°38'40.57799"** Longitude: **93°10'27.61522"**

Mapping Angle: **0°12'52"** Combination Scale Factor: **0.99994356**

Monument Type: Cast in-place concrete monument with aluminum disk.



This document was prepared by GBC and DCI for use by Jasper County, Iowa.