

**Jasper County, Iowa**  
 Iowa South Zone (1402)  
 Horiz. Datum: NAD83(1996)  
 Vert. Datum: NAVD 1988  
 US Survey Feet  
**2005**

Point Name: **N04**

**Designation:** Jasper County GPS Monument N04-2005

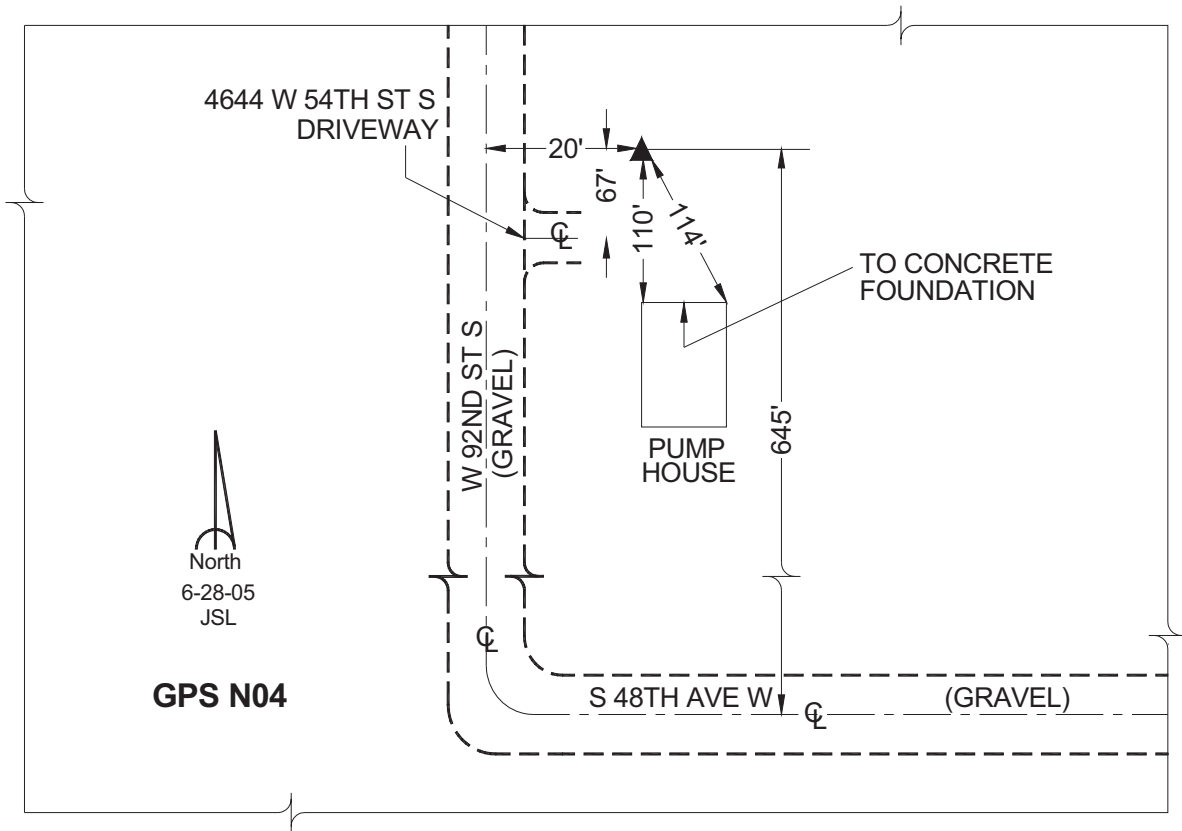
Northing: **602680.05sft**    Easting: **1743983.82sft**

Orthometric Height: **767.45sft**    Ellipsoid Height: **662.80sft**    **Geoid03**

Latitude: **41°39'12.78259"**    Longitude: **93°07'15.69104"**

Mapping Angle: **0°14'59"**    Combination Scale Factor: **0.99994791**

**Monument Type:** Cast in-place concrete monument with aluminum disk.



*This document was prepared by GBC and DCI for use by Jasper County, Iowa.*