

Jasper County, Iowa
Iowa South Zone (1402)
Horiz. Datum: NAD83(1996)
Vert. Datum: NAVD 1988
US Survey Feet
2005

Point Name: **O01**

Designation: Jasper County GPS Monument O01-2005

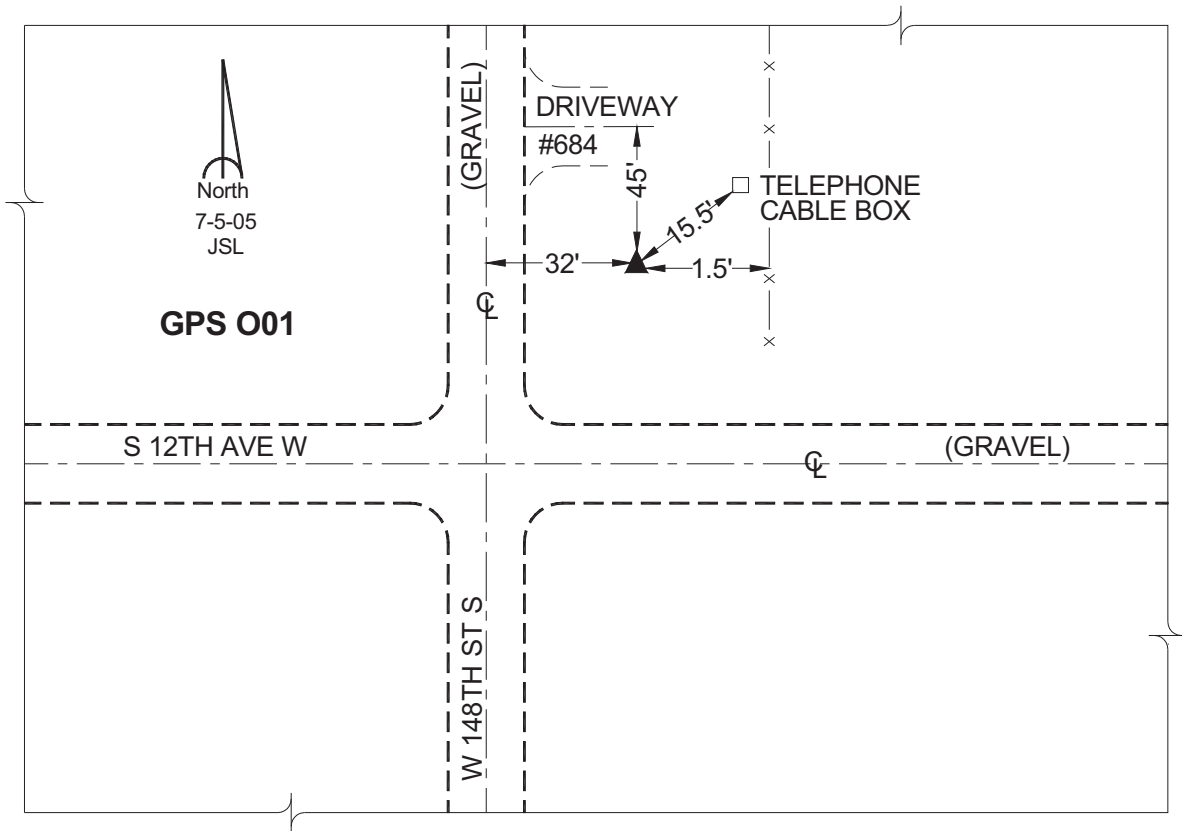
Northing: **616988.06sft** Easting: **1681826.41sft**

Orthometric Height: **913.22sft** Ellipsoid Height: **809.50sft** **Geoid03**

Latitude: **41°41'36.01305"** Longitude: **93°20'54.17051"**

Mapping Angle: **0°06'00"** Combination Scale Factor: **0.99994663**

Monument Type: Cast in-place concrete monument with aluminum disk.



This document was prepared by GBC and DCI for use by Jasper County, Iowa.