

Jasper County, Iowa
Iowa South Zone (1402)
Horiz. Datum: NAD83(1996)
Vert. Datum: NAVD 1988
US Survey Feet
2005

Point Name: **O02**

Designation: Jasper County GPS Monument O02-2005

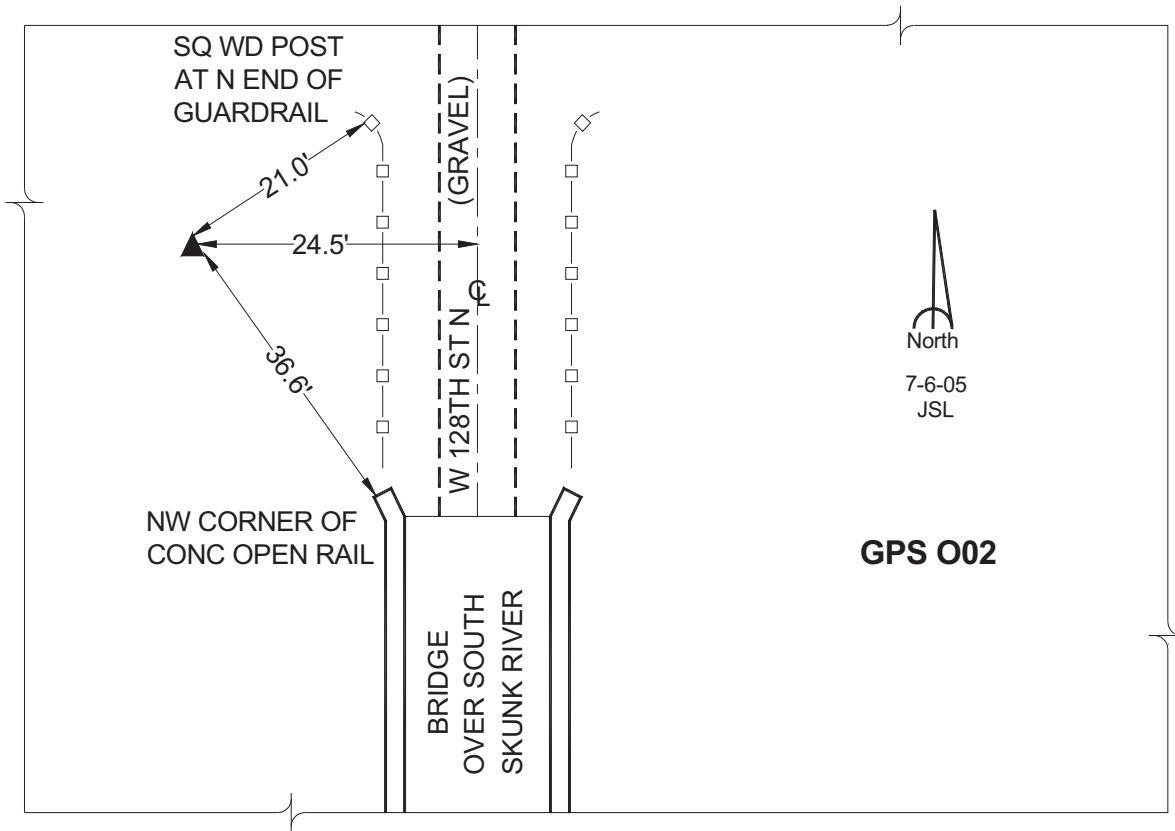
Northing: **615110.95sft** Easting: **1695159.47sft**

Orthometric Height: **802.29sft** Ellipsoid Height: **698.31sft** **Geoid03**

Latitude: **41°41'17.20151"** Longitude: **93°17'58.48249"**

Mapping Angle: **0°07'55"** Combination Scale Factor: **0.99995116**

Monument Type: Cast in-place concrete monument with aluminum disk.



This document was prepared by GBC and DCI for use by Jasper County, Iowa.