

Jasper County, Iowa
Iowa South Zone (1402)
Horiz. Datum: NAD83(1996)
Vert. Datum: NAVD 1988
US Survey Feet
2005

Point Name: **O03**

Designation: Jasper County GPS Monument O03-2005

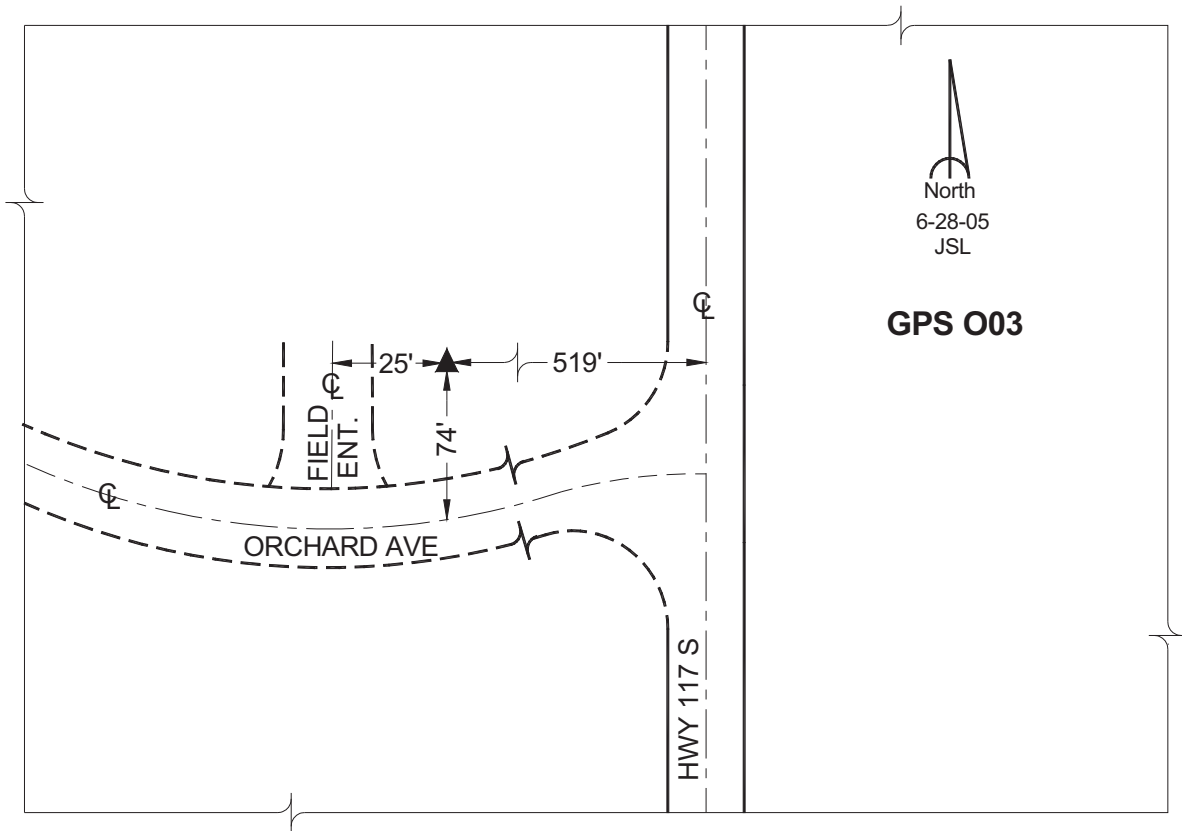
Northing: **615177.10sft** Easting: **1709062.77sft**

Orthometric Height: **786.44sft** Ellipsoid Height: **682.24sft** **Geoid03**

Latitude: **41°41'17.49837"** Longitude: **93°14'55.23353"**

Mapping Angle: **0°09'56"** Combination Scale Factor: **0.99995194**

Monument Type: Cast in-place concrete monument with aluminum disk.



This document was prepared by GBC and DCI for use by Jasper County, Iowa.