

Jasper County, Iowa
Iowa South Zone (1402)
Horiz. Datum: NAD83(1996)
Vert. Datum: NAVD 1988
US Survey Feet
2005

Point Name: **O04**

Designation: Jasper County GPS Monument O04-2005

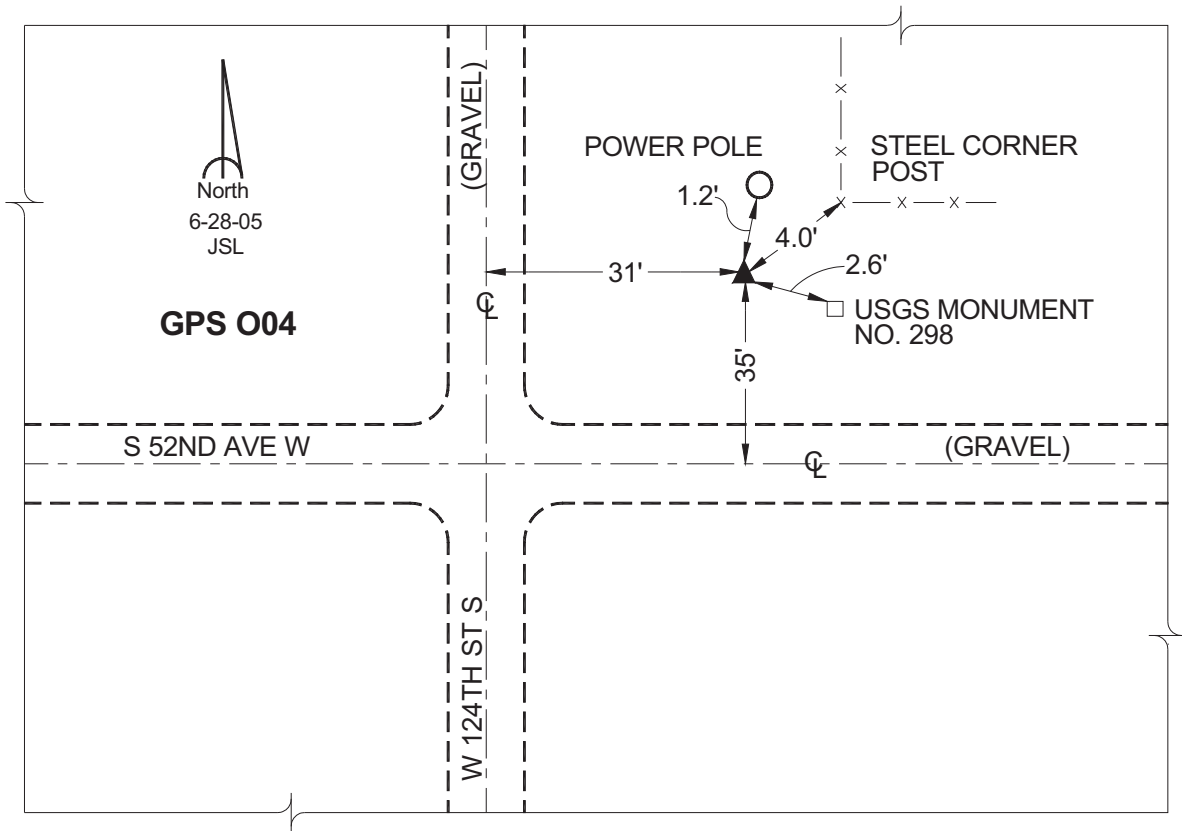
Northing: **599308.01sft** Easting: **1697742.98sft**

Orthometric Height: **918.57sft** Ellipsoid Height: **814.44sft** **Geoid03**

Latitude: **41°38'41.01397"** Longitude: **93°17'24.93389"**

Mapping Angle: **0°08'17"** Combination Scale Factor: **0.99993947**

Monument Type: Cast in-place concrete monument with aluminum disk.



This document was prepared by GBC and DCI for use by Jasper County, Iowa.