

Jasper County, Iowa
Iowa South Zone (1402)
Horiz. Datum: NAD83(1996)
Vert. Datum: NAVD 1988
US Survey Feet
2005

Point Name: **O05**

Designation: Jasper County GPS Monument O05-2005

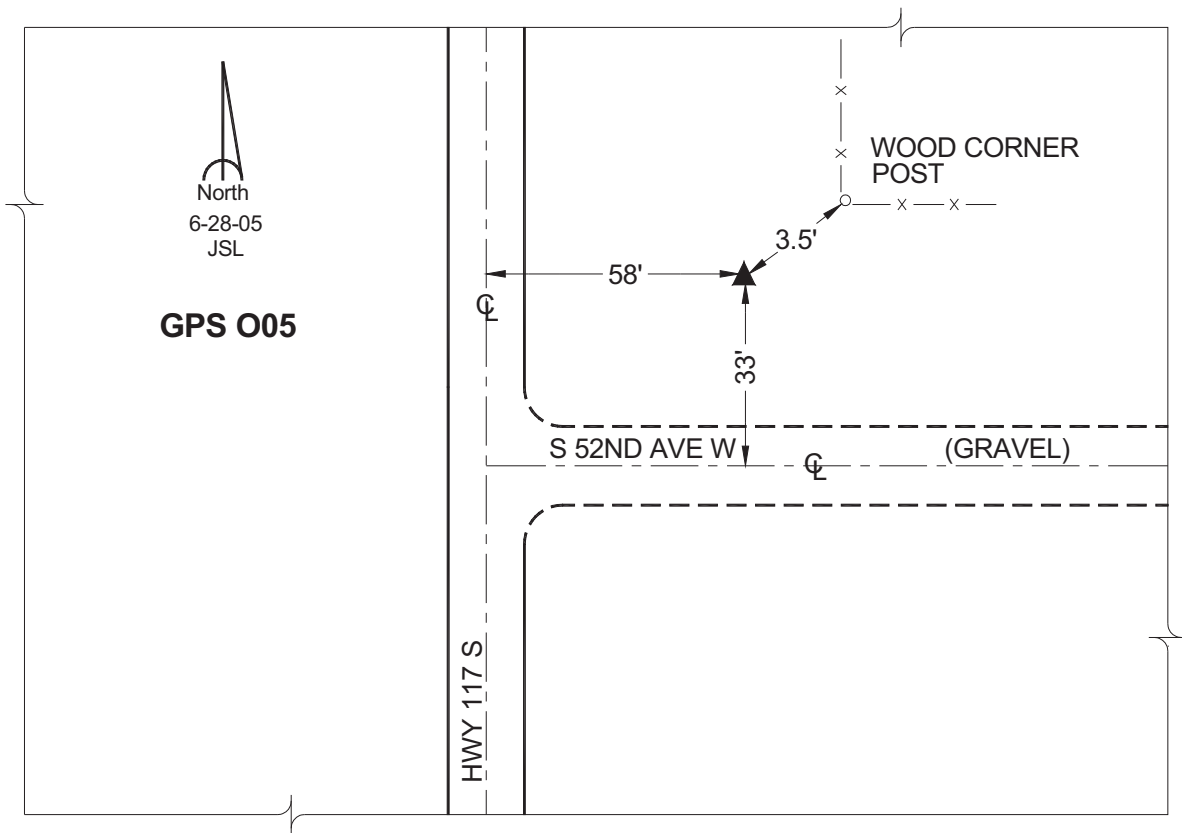
Northing: **599236.63sft** Easting: **1713660.97sft**

Orthometric Height: **917.03sft** Ellipsoid Height: **812.67sft** **Geoid03**

Latitude: **41°38'39.87692"** Longitude: **93°13'55.27619"**

Mapping Angle: **0°10'35"** Combination Scale Factor: **0.99993951**

Monument Type: Cast in-place concrete monument with aluminum disk.



This document was prepared by GBC and DCI for use by Jasper County, Iowa.