

**Jasper County, Iowa**  
Iowa South Zone (1402)  
Horiz. Datum: NAD83(1996)  
Vert. Datum: NAVD 1988  
US Survey Feet  
**2005**

Point Name: **O06**

**Designation:** Jasper County GPS Monument O06-2005

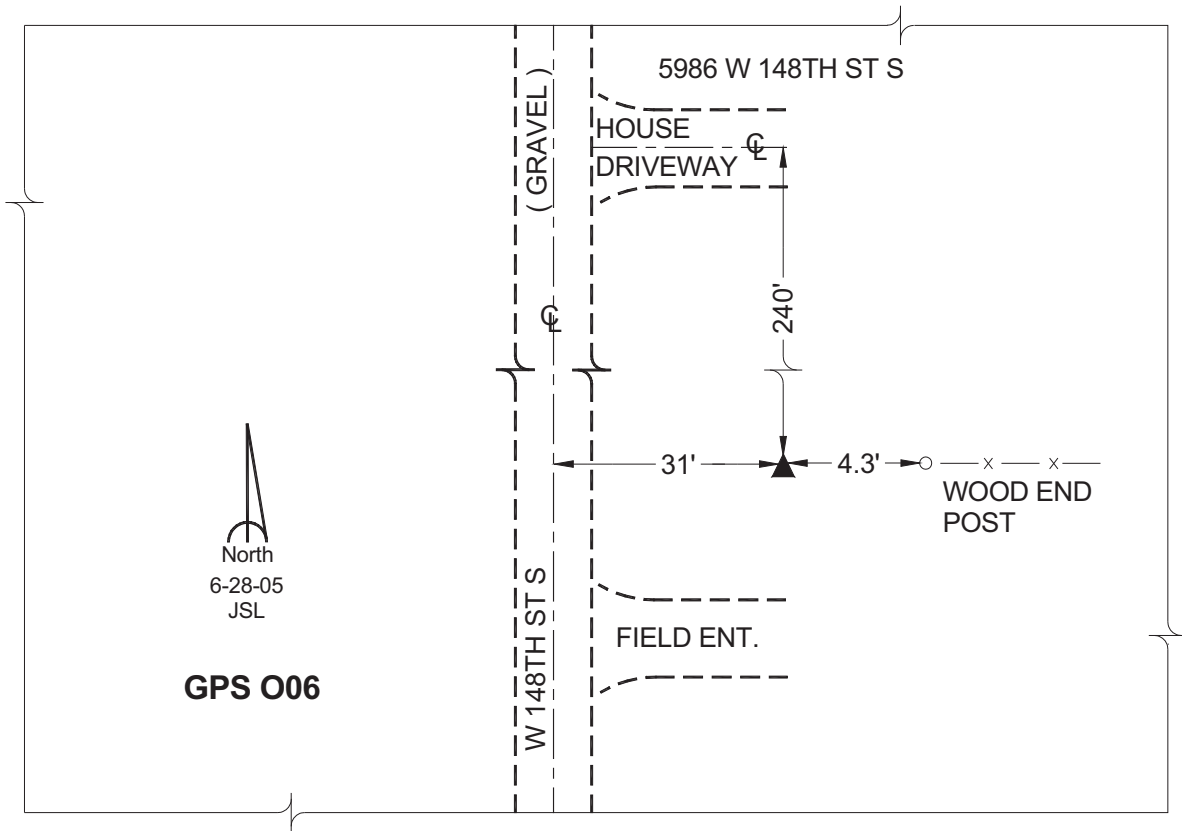
Northing: **593627.00sft**    Easting: **1681843.05sft**

Orthometric Height: **880.73sft**    Ellipsoid Height: **776.83sft**    **Geoid03**

Latitude: **41°37'45.21334"**    Longitude: **93°20'54.48764"**

Mapping Angle: **0°05'59"**    Combination Scale Factor: **0.99993920**

**Monument Type:** Cast in-place concrete monument with aluminum disk.



*This document was prepared by GBC and DCI for use by Jasper County, Iowa.*