

Jasper County, Iowa
Iowa South Zone (1402)
Horiz. Datum: NAD83(1996)
Vert. Datum: NAVD 1988
US Survey Feet
2005

Point Name: **O07**

Designation: Jasper County GPS Monument O07-2005

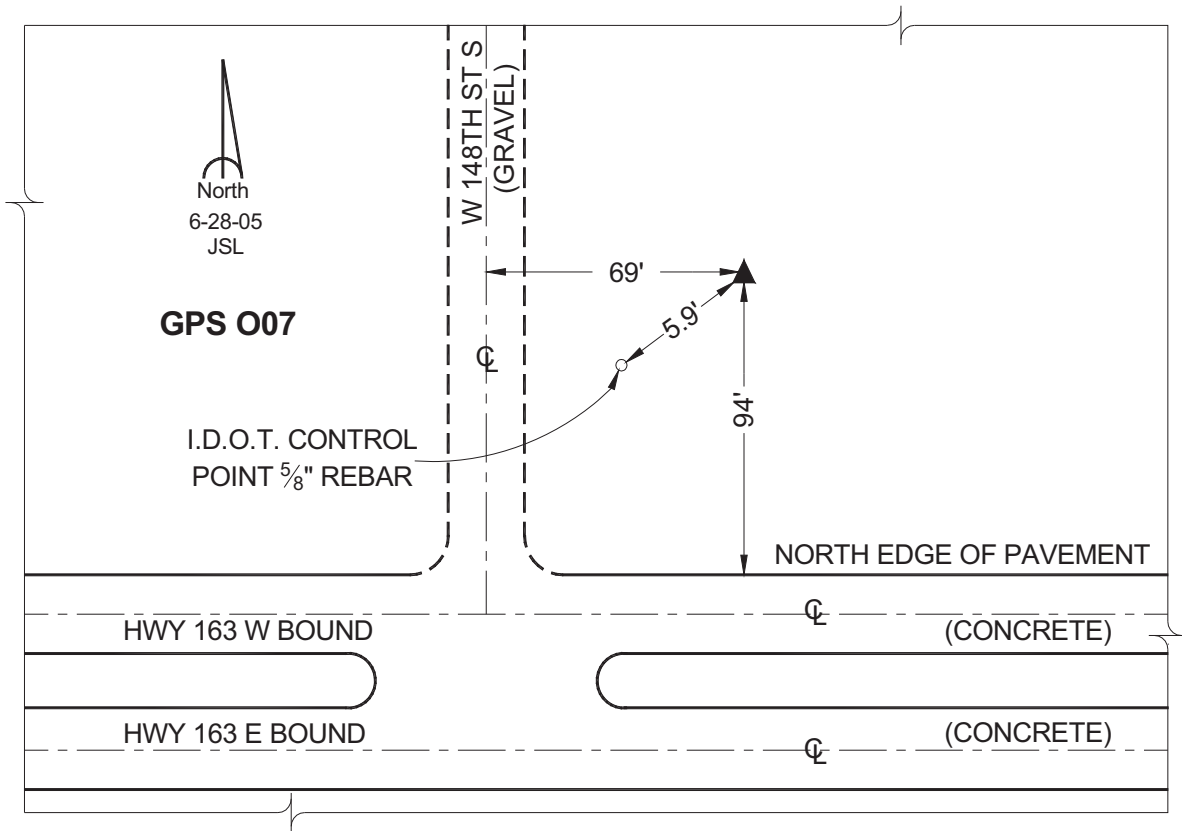
Northing: **583443.32sft** Easting: **1681880.58sft**

Orthometric Height: **904.81sft** Ellipsoid Height: **800.85sft** **Geoid03**

Latitude: **41°36'04.59994"** Longitude: **93°20'54.22705"**

Mapping Angle: **0°06'00"** Combination Scale Factor: **0.99993453**

Monument Type: Cast in-place concrete monument with aluminum disk.



This document was prepared by GBC and DCI for use by Jasper County, Iowa.