

Jasper County, Iowa
 Iowa South Zone (1402)
 Horiz. Datum: NAD83(1996)
 Vert. Datum: NAVD 1988
 US Survey Feet
2005

Point Name: **P02**

Designation: Jasper County GPS Monument P02-2005

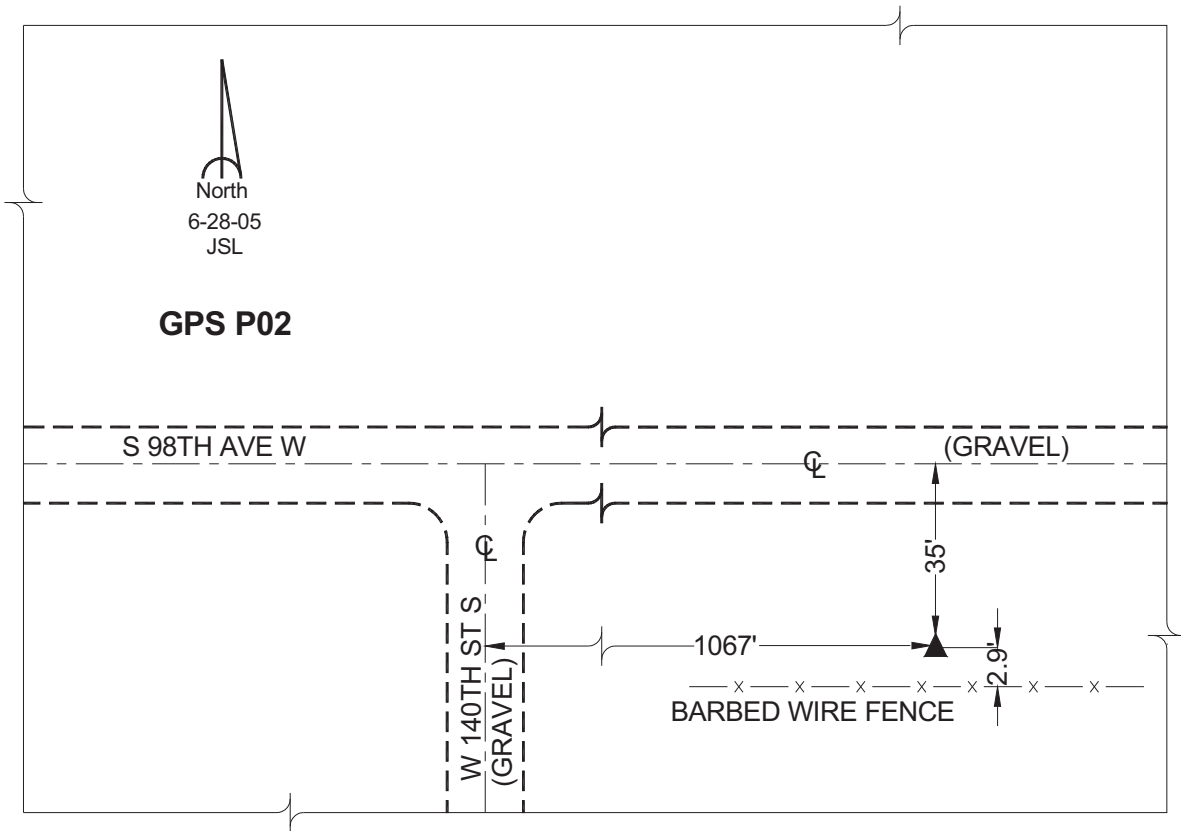
Northing: **569257.12sft** Easting: **1688292.39sft**

Orthometric Height: **886.10sft** Ellipsoid Height: **781.99sft** **Geoid03**

Latitude: **41°33'44.32278"** Longitude: **93°19'30.20677"**

Mapping Angle: **0°06'55"** Combination Scale Factor: **0.99993091**

Monument Type: Cast in-place concrete monument with aluminum disk.



This document was prepared by GBC and DCI for use by Jasper County, Iowa.