

Jasper County, Iowa
Iowa South Zone (1402)
Horiz. Datum: NAD83(1996)
Vert. Datum: NAVD 1988
US Survey Feet
2005

Point Name: **P03**

Designation: Jasper County GPS Monument P03-2005

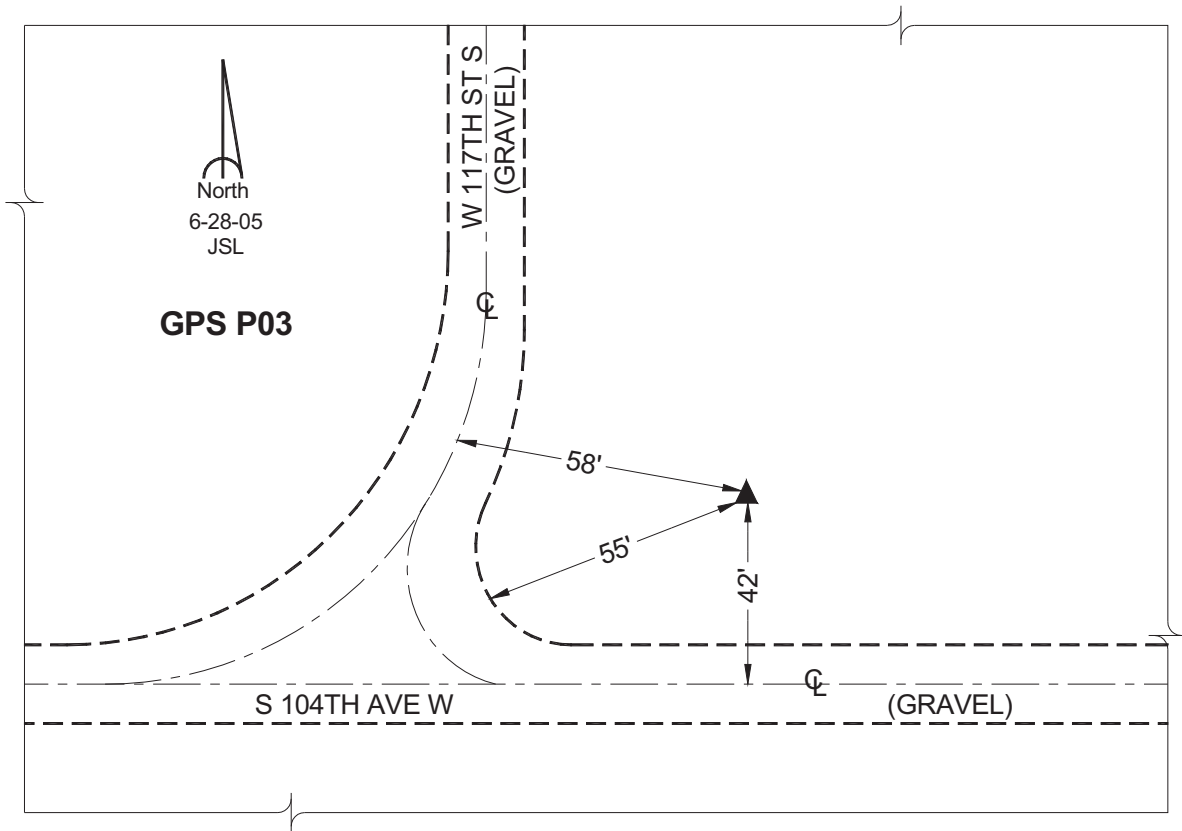
Northing: **565386.36sft** Easting: **1702694.68sft**

Orthometric Height: **904.13sft** Ellipsoid Height: **799.82sft** **Geoid03**

Latitude: **41°33'05.75069"** Longitude: **93°16'20.88220"**

Mapping Angle: **0°09'00"** Combination Scale Factor: **0.99992890**

Monument Type: Cast in-place concrete monument with aluminum disk.



This document was prepared by GBC and DCI for use by Jasper County, Iowa.