

**Jasper County, Iowa**  
Iowa South Zone (1402)  
Horiz. Datum: NAD83(1996)  
Vert. Datum: NAVD 1988  
US Survey Feet  
**2005**

Point Name: **P04**

**Designation:** Jasper County GPS Monument P04-2005

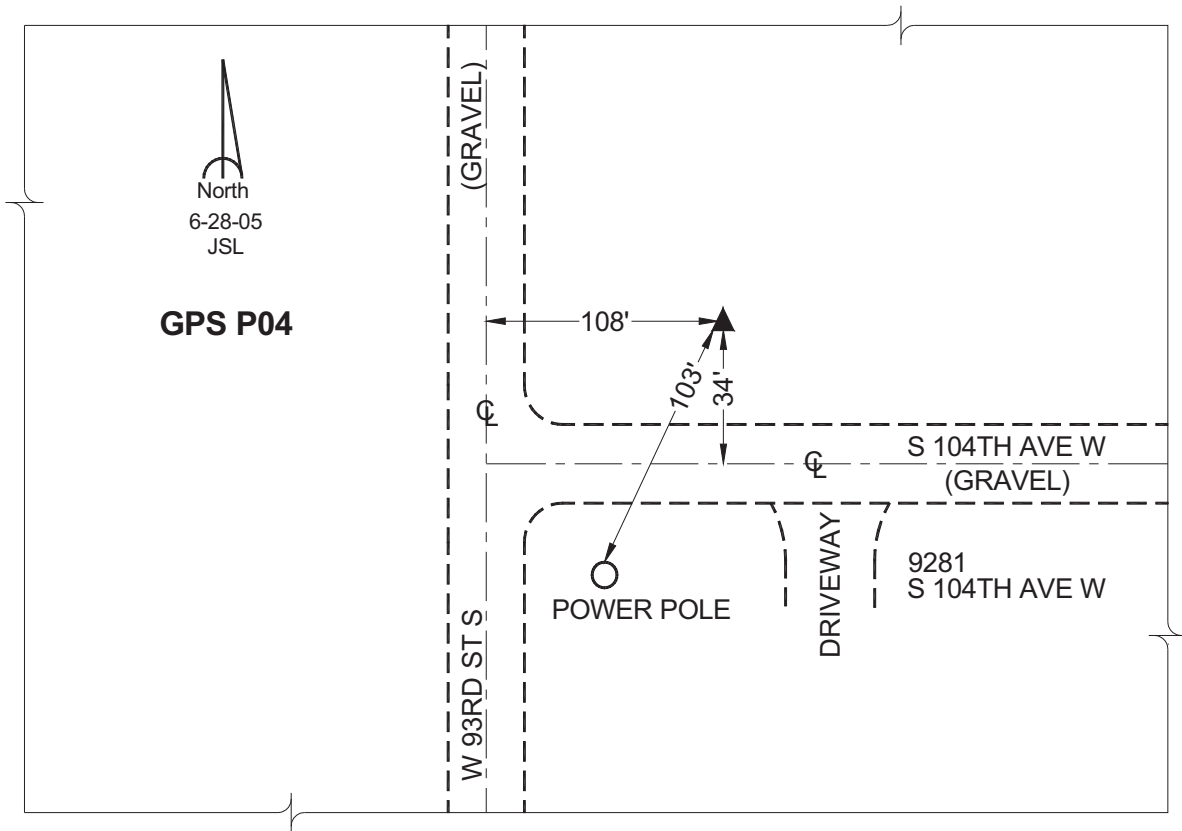
Northing: **565439.59sft**    Easting: **1718611.43sft**

Orthometric Height: **877.67sft**    Ellipsoid Height: **773.16sft**    **Geoid03**

Latitude: **41°33'05.81267"**    Longitude: **93°12'51.53462"**

Mapping Angle: **0°11'17"**    Combination Scale Factor: **0.99993018**

**Monument Type:** Cast in-place concrete monument with aluminum disk.



*This document was prepared by GBC and DCI for use by Jasper County, Iowa.*