

Jasper County, Iowa
Iowa South Zone (1402)
Horiz. Datum: NAD83(1996)
Vert. Datum: NAVD 1988
US Survey Feet
2005

Point Name: **P05**

Designation: Jasper County GPS Monument P05-2005

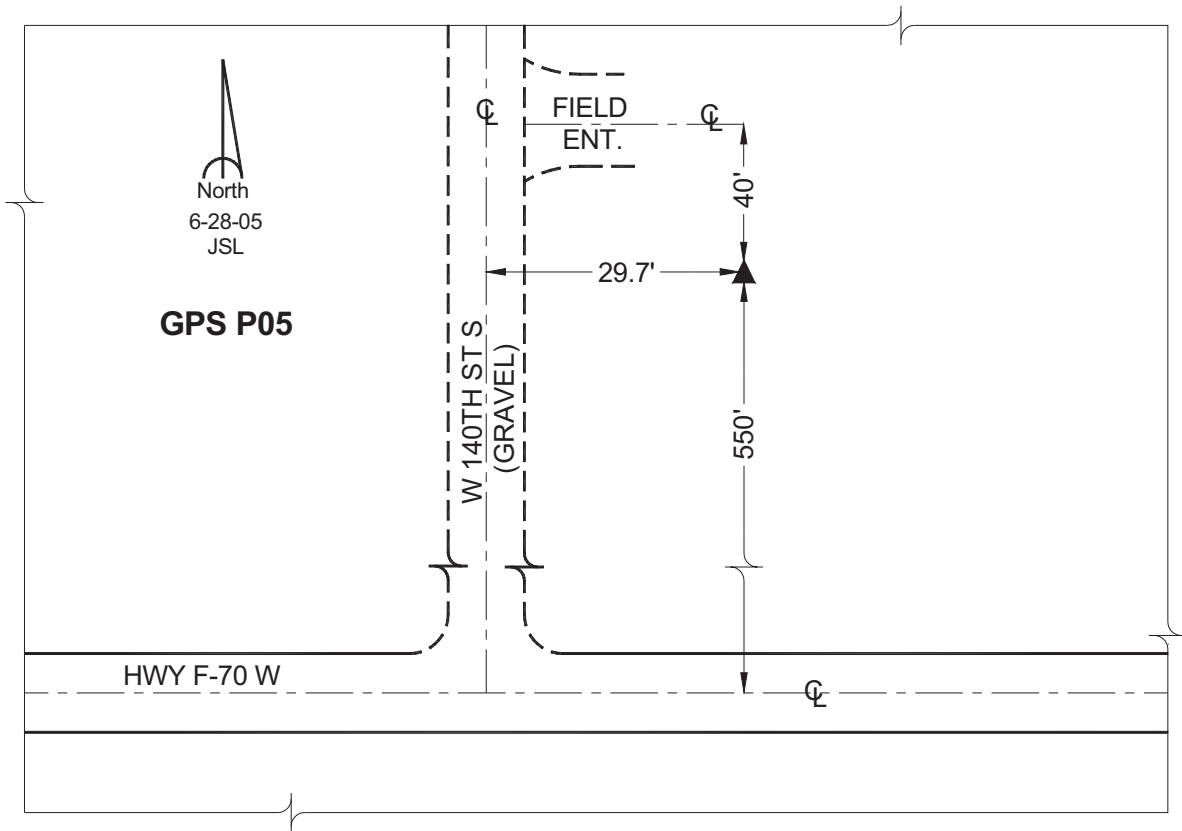
Northing: **555211.10sft** Easting: **1687330.92sft**

Orthometric Height: **789.91sft** Ellipsoid Height: **685.79sft** **Geoid03**

Latitude: **41°31'25.56698"** Longitude: **93°19'43.21865"**

Mapping Angle: **0°06'46"** Combination Scale Factor: **0.99993149**

Monument Type: Cast in-place concrete monument with aluminum disk.



This document was prepared by GBC and DCI for use by Jasper County, Iowa.