

Jasper County, Iowa
Iowa South Zone (1402)
Horiz. Datum: NAD83(1996)
Vert. Datum: NAVD 1988
US Survey Feet
2005

Point Name: **P06**

Designation: Jasper County GPS Monument P06-2005

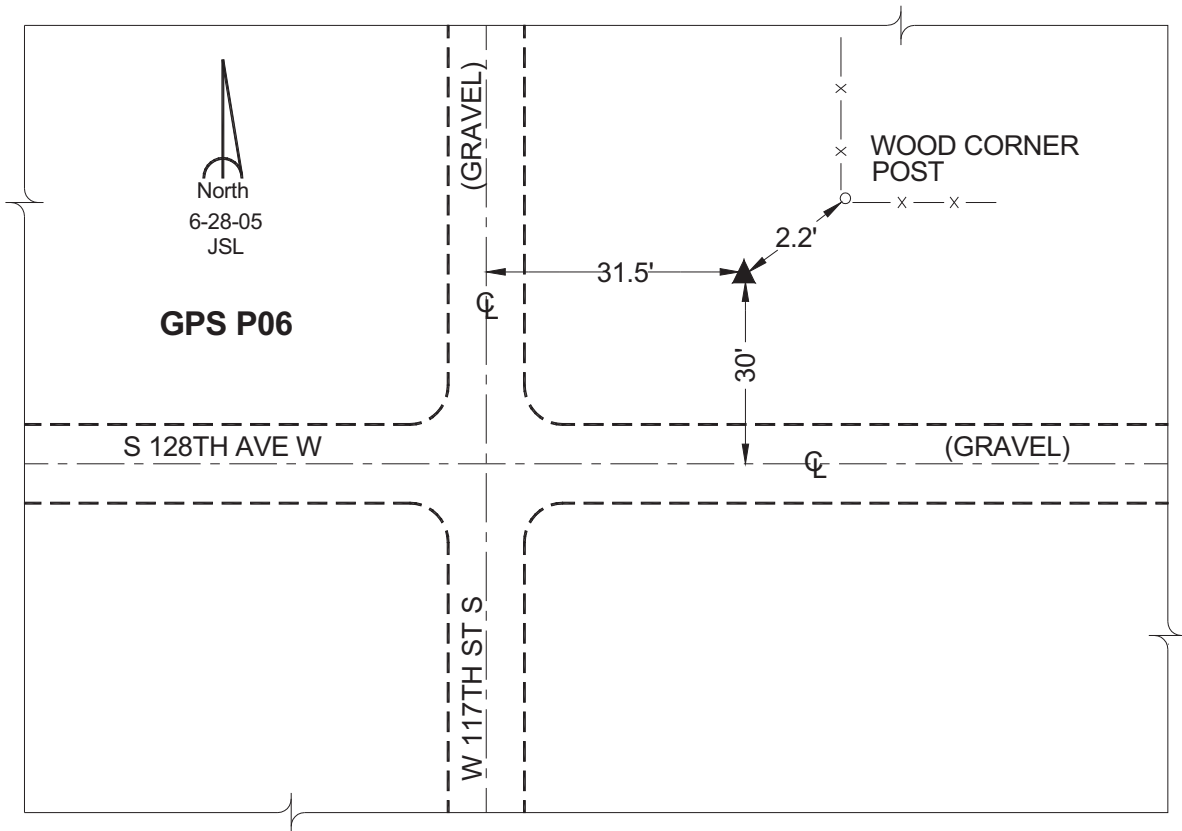
Northing: **549552.43sft** Easting: **1702751.15sft**

Orthometric Height: **889.94sft** Ellipsoid Height: **785.61sft** **Geoid03**

Latitude: **41°30'29.30956"** Longitude: **93°16'20.68436"**

Mapping Angle: **0°09'00"** Combination Scale Factor: **0.99992523**

Monument Type: Cast in-place concrete monument with aluminum disk.



This document was prepared by GBC and DCI for use by Jasper County, Iowa.