

Jasper County, Iowa
Iowa South Zone (1402)
Horiz. Datum: NAD83(1996)
Vert. Datum: NAVD 1988
US Survey Feet
2005

Point Name: **P07**

Designation: Jasper County GPS Monument P07-2005

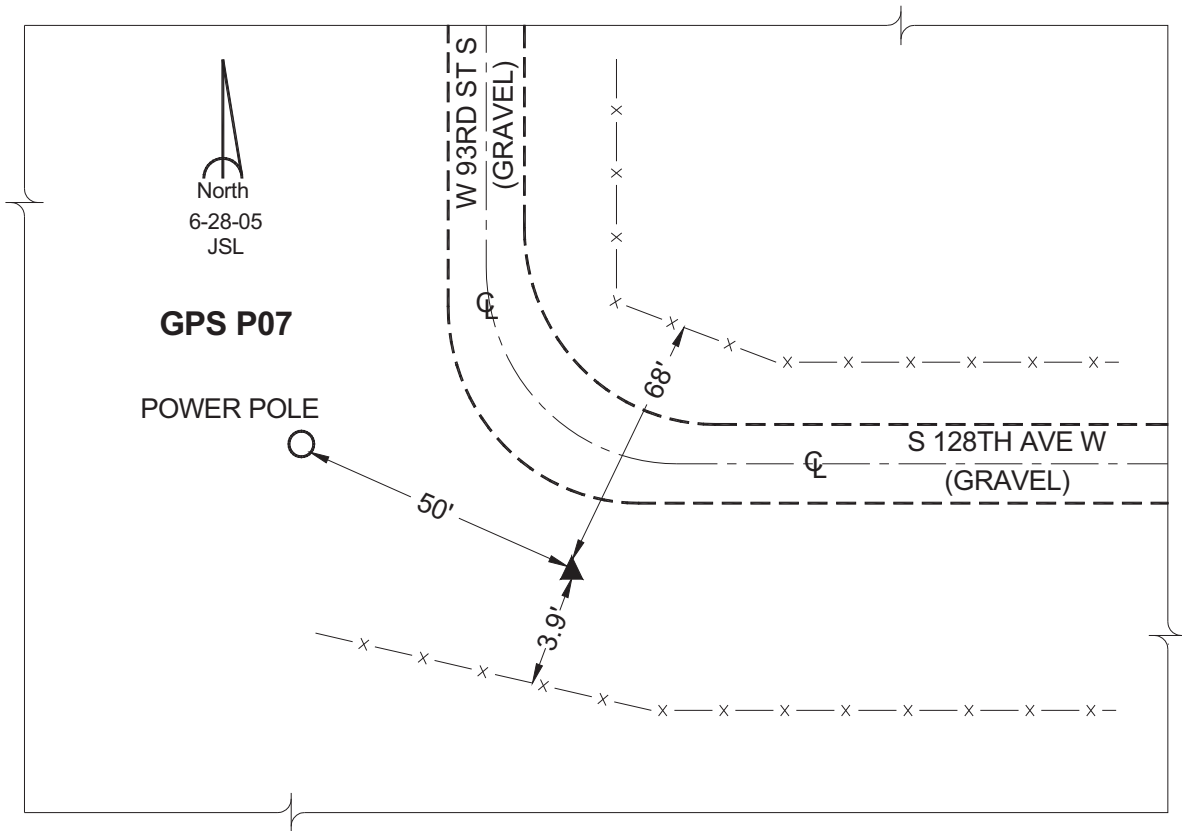
Northing: **549528.91sft** Easting: **1718610.64sft**

Orthometric Height: **886.95sft** Ellipsoid Height: **782.43sft** **Geoid03**

Latitude: **41°30'28.61499"** Longitude: **93°12'52.23181"**

Mapping Angle: **0°11'17"** Combination Scale Factor: **0.99992537**

Monument Type: Cast in-place concrete monument with aluminum disk.



This document was prepared by GBC and DCI for use by Jasper County, Iowa.