

**Jasper County, Iowa**  
Iowa South Zone (1402)  
Horiz. Datum: NAD83(1996)  
Vert. Datum: NAVD 1988  
US Survey Feet  
**2005**

Point Name: **Q01**

**Designation:** Jasper County GPS Monument Q01-2005

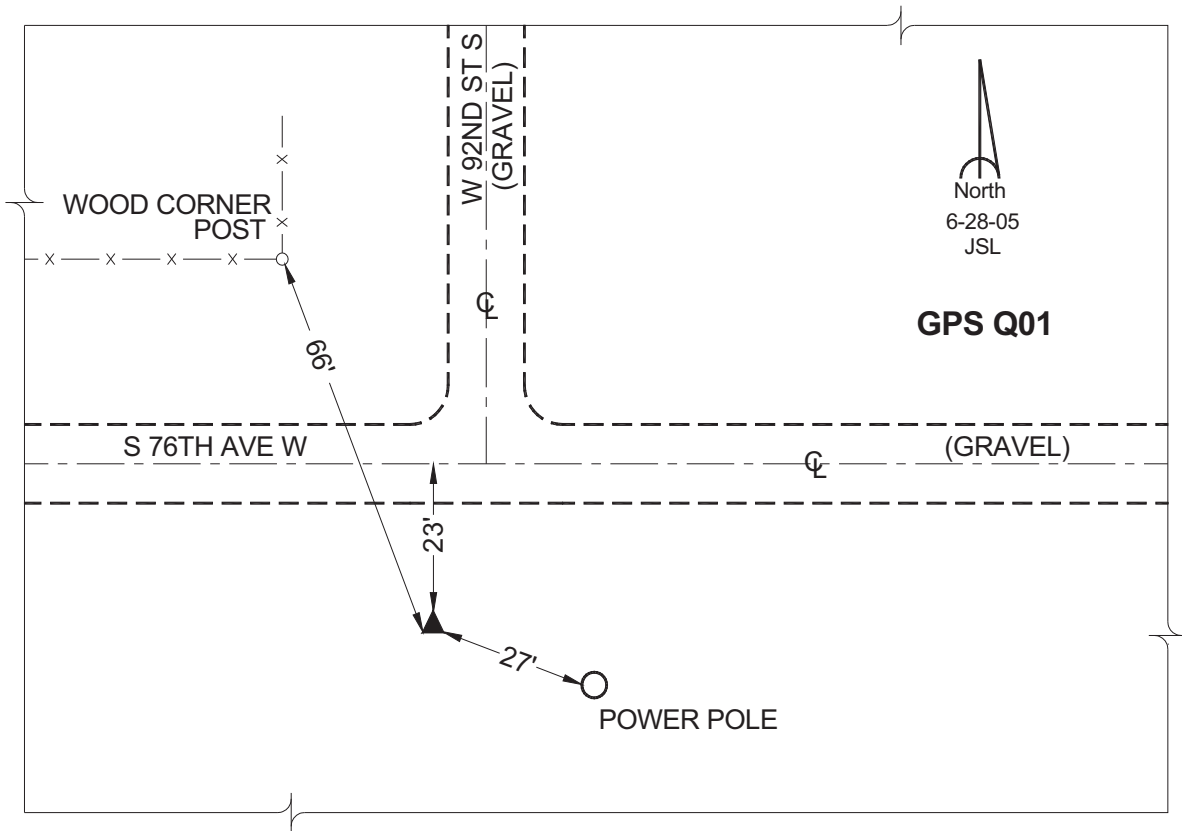
Northing: **583409.58sft**    Easting: **1719035.13sft**

Orthometric Height: **913.87sft**    Ellipsoid Height: **809.39sft**    **Geoid03**

Latitude: **41°36'03.34016"**    Longitude: **93°12'45.18087"**

Mapping Angle: **0°11'22"**    Combination Scale Factor: **0.99993408**

**Monument Type:** Cast in-place concrete monument with aluminum disk.



*This document was prepared by GBC and DCI for use by Jasper County, Iowa.*