

Jasper County, Iowa
Iowa South Zone (1402)
Horiz. Datum: NAD83(1996)
Vert. Datum: NAVD 1988
US Survey Feet
2005

Point Name: **Q02**

Designation: Jasper County GPS Monument Q02-2005

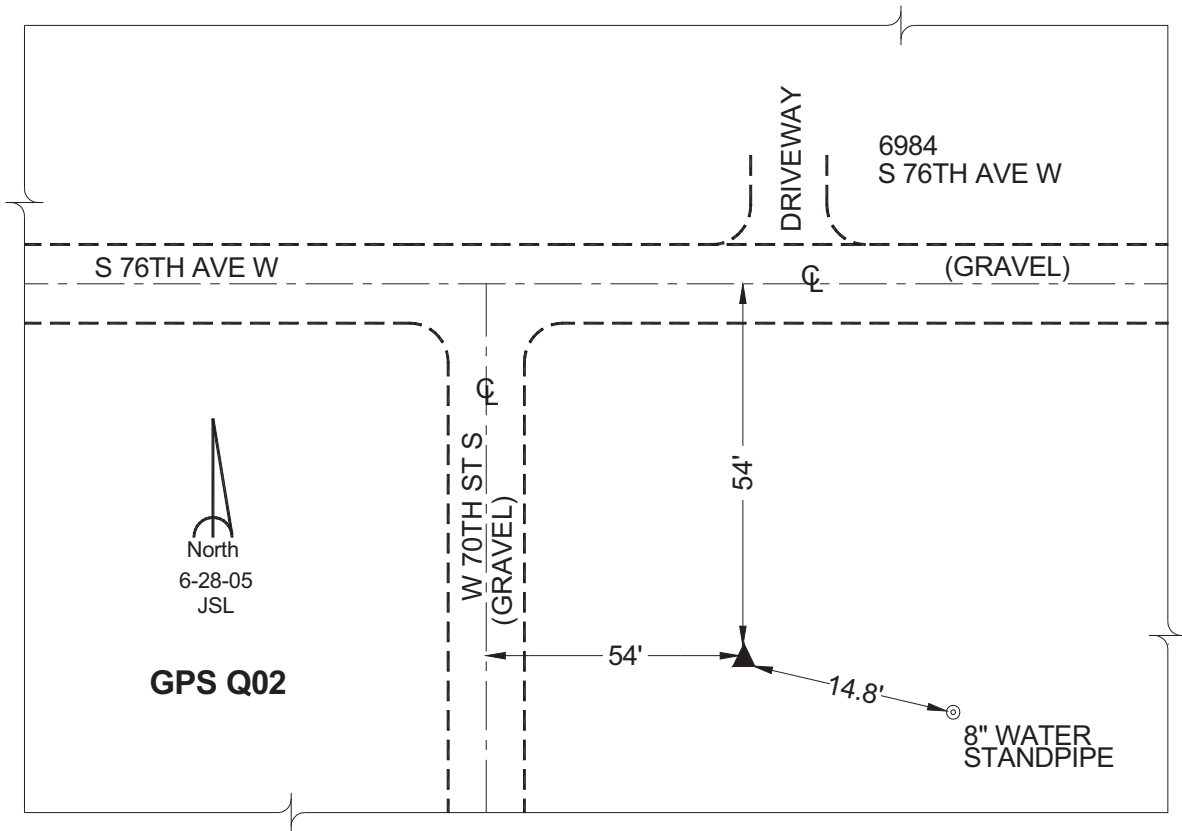
Northing: **583408.79sft** Easting: **1733569.95sft**

Orthometric Height: **885.76sft** Ellipsoid Height: **781.13sft** **Geoid03**

Latitude: **41°36'02.81390"** Longitude: **93°09'33.86750"**

Mapping Angle: **0°13'28"** Combination Scale Factor: **0.99993541**

Monument Type: Cast in-place concrete monument with aluminum disk.



This document was prepared by GBC and DCI for use by Jasper County, Iowa.