

Jasper County, Iowa
Iowa South Zone (1402)
Horiz. Datum: NAD83(1996)
Vert. Datum: NAVD 1988
US Survey Feet
2005

Point Name: **Q03**

Designation: Jasper County GPS Monument Q03-2005

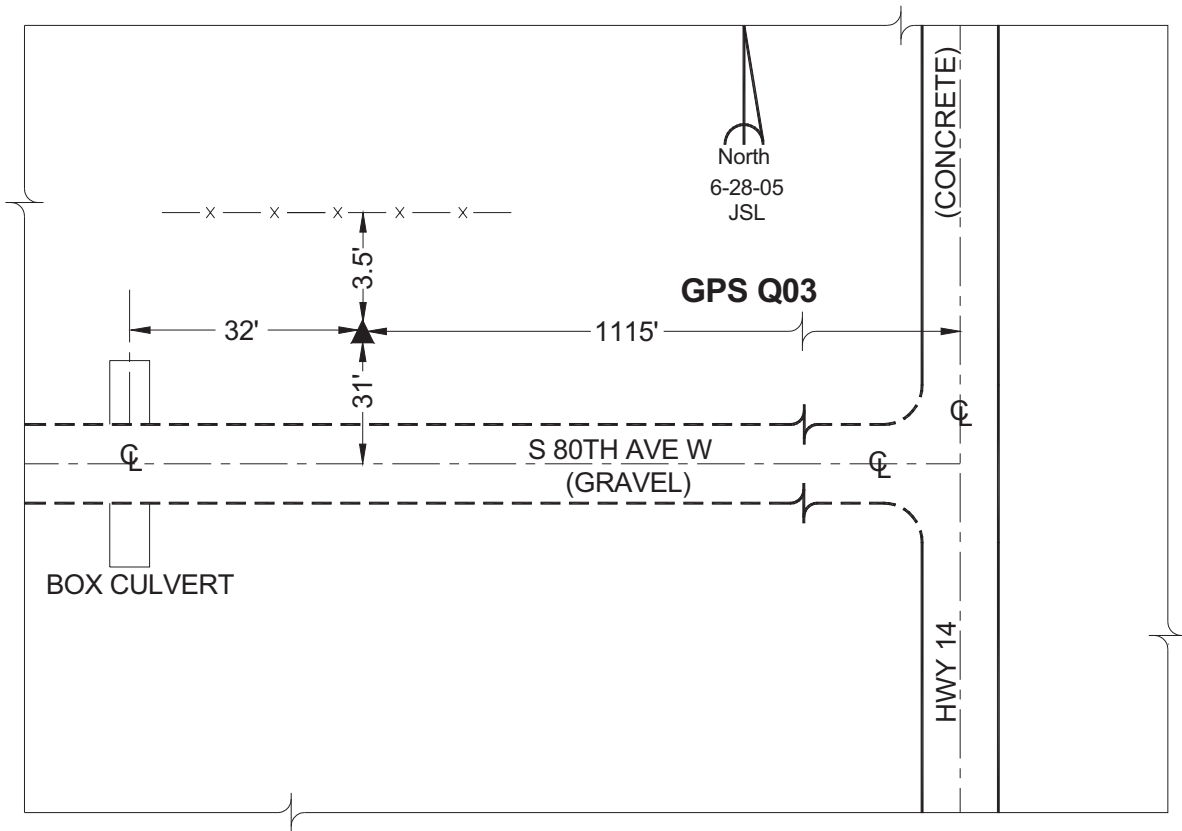
Northing: **581490.98sft** Easting: **1749621.14sft**

Orthometric Height: **838.07sft** Ellipsoid Height: **733.44sft** **Geoid03**

Latitude: **41°35'43.19196"** Longitude: **93°06'02.71183"**

Mapping Angle: **0°15'47"** Combination Scale Factor: **0.99993703**

Monument Type: Cast in-place concrete monument with aluminum disk.



This document was prepared by GBC and DCI for use by Jasper County, Iowa.