

Jasper County, Iowa
Iowa South Zone (1402)
Horiz. Datum: NAD83(1996)
Vert. Datum: NAVD 1988
US Survey Feet
2005

Point Name: **Q04**

Designation: Jasper County GPS Monument Q04-2005

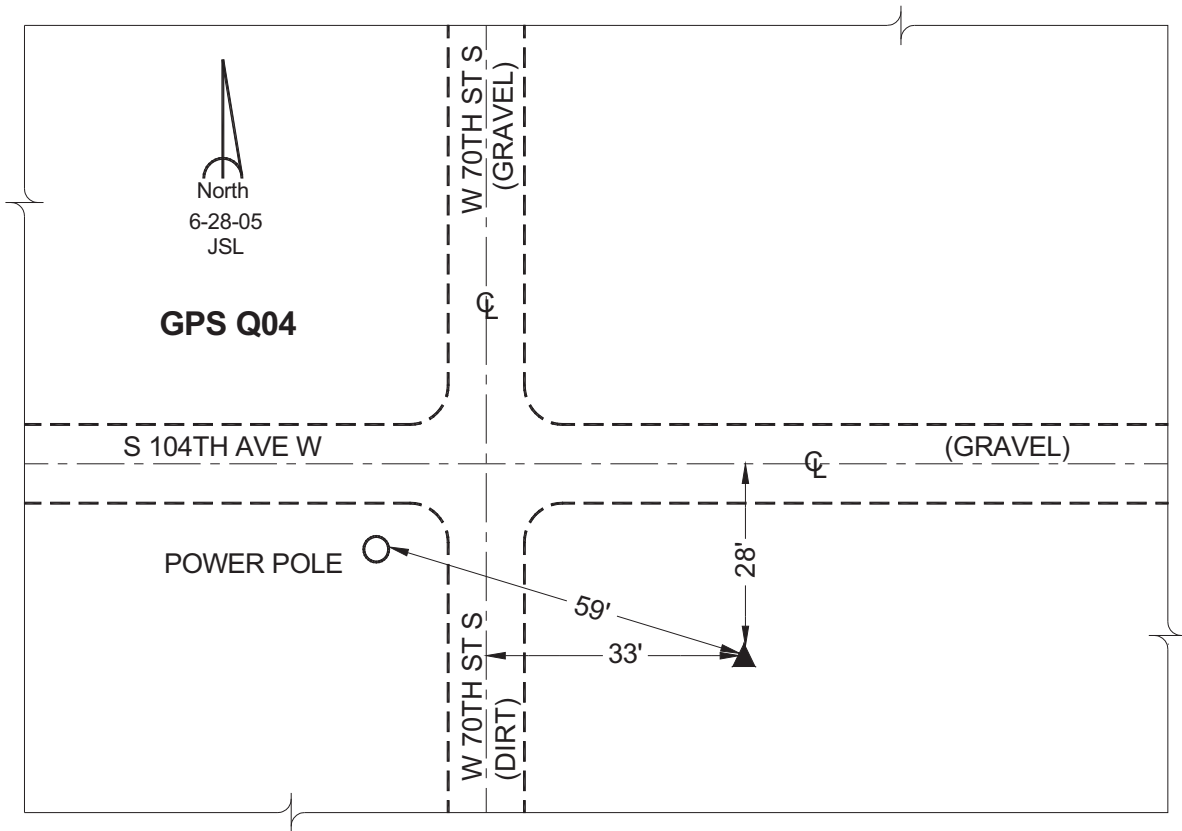
Northing: **565467.95sft** Easting: **1733700.53sft**

Orthometric Height: **915.46sft** Ellipsoid Height: **810.78sft** **Geoid03**

Latitude: **41°33'05.55594"** Longitude: **93°09'33.07398"**

Mapping Angle: **0°13'28"** Combination Scale Factor: **0.99992837**

Monument Type: Cast in-place concrete monument with aluminum disk.



This document was prepared by GBC and DCI for use by Jasper County, Iowa.