

Jasper County, Iowa
Iowa South Zone (1402)
Horiz. Datum: NAD83(1996)
Vert. Datum: NAVD 1988
US Survey Feet
2005

Point Name: **Q05**

Designation: Jasper County GPS Monument Q05-2005

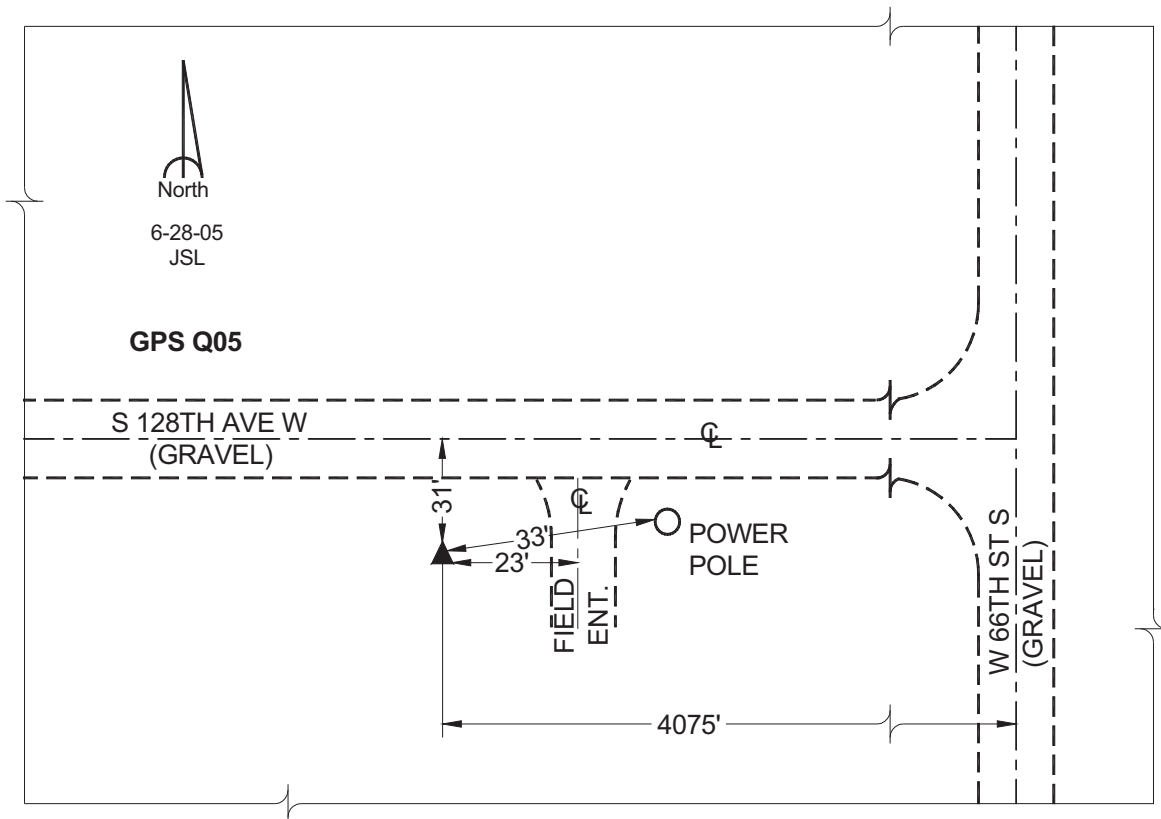
Northing: **549607.93sft** Easting: **1732384.61sft**

Orthometric Height: **849.97sft** Ellipsoid Height: **745.29sft** **Geoid03**

Latitude: **41°30'28.90970"** Longitude: **93°09'51.18685"**

Mapping Angle: **0°13'16"** Combination Scale Factor: **0.99992715**

Monument Type: Cast in-place concrete monument with aluminum disk.



This document was prepared by GBC and DCI for use by Jasper County, Iowa.