

**Jasper County, Iowa**  
Iowa South Zone (1402)  
Horiz. Datum: NAD83(1996)  
Vert. Datum: NAVD 1988  
US Survey Feet  
**2005**

Point Name: **R01**

**Designation:** Jasper County GPS Monument R01-2005

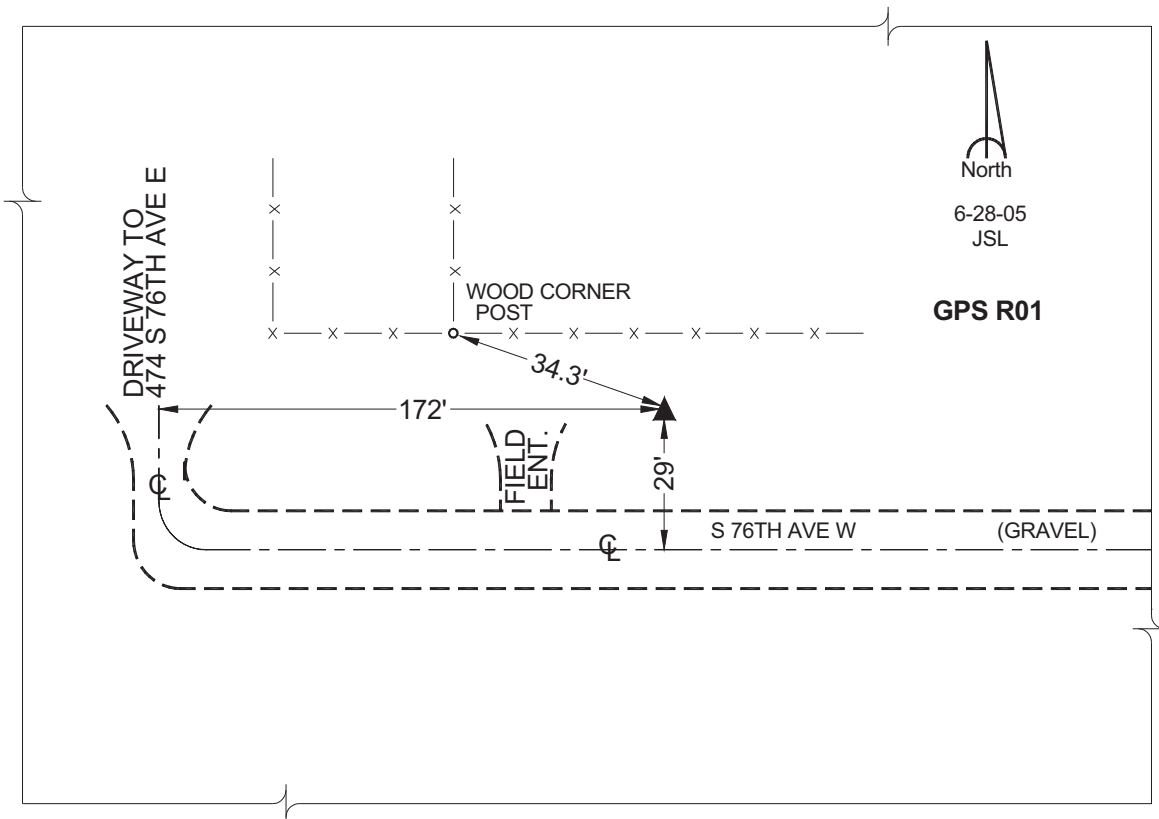
Northing: **583777.81sft**    Easting: **1764003.88sft**

Orthometric Height: **763.72sft**    Ellipsoid Height: **658.99sft**    **Geoid03**

Latitude: **41°36'05.09006"**    Longitude: **93°02'53.26113"**

Mapping Angle: **0°17'52"**    Combination Scale Factor: **0.99994132**

**Monument Type:** Cast in-place concrete monument with aluminum disk.



*This document was prepared by GBC and DCI for use by Jasper County, Iowa.*