

Jasper County, Iowa
Iowa South Zone (1402)
Horiz. Datum: NAD83(1996)
Vert. Datum: NAVD 1988
US Survey Feet
2005

Point Name: **R02**

Designation: Jasper County GPS Monument R02-2005

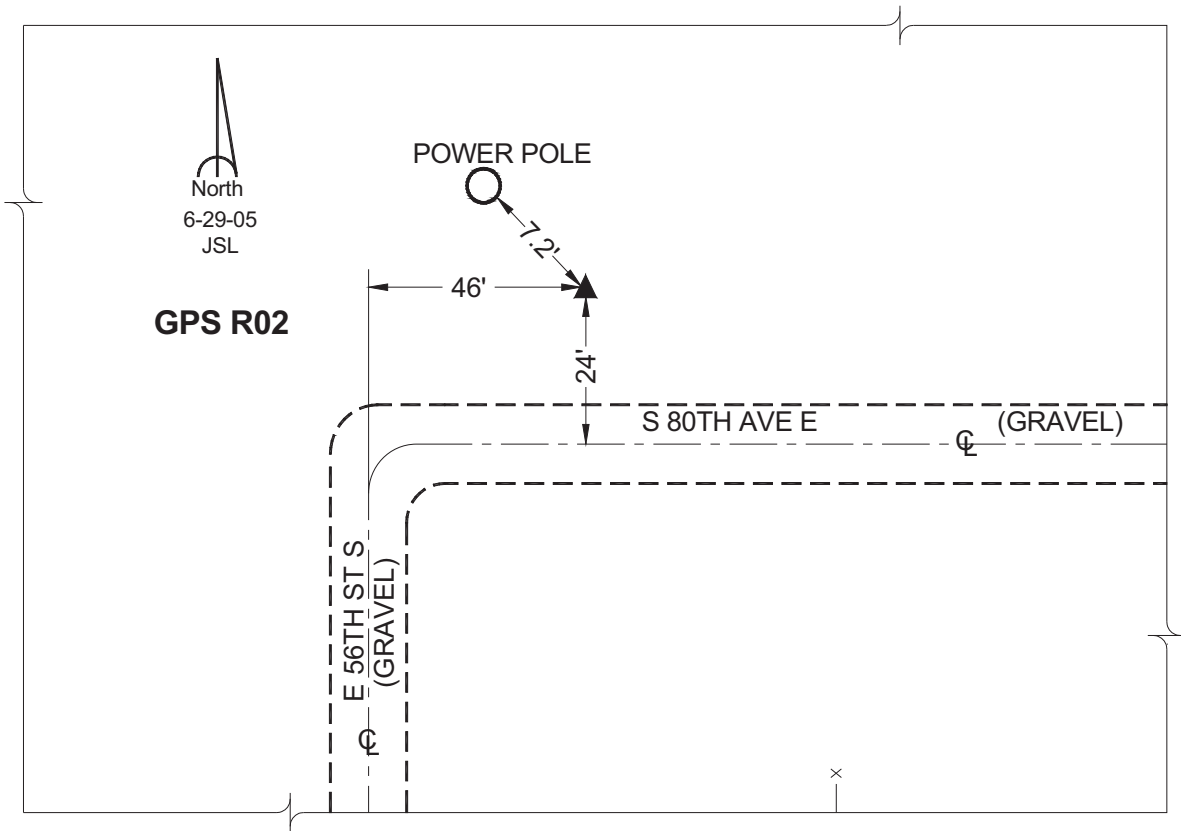
Northing: **581624.31sft** Easting: **1780862.97sft**

Orthometric Height: **901.24sft** Ellipsoid Height: **796.42sft** **Geoid03**

Latitude: **41°35'42.88987"** Longitude: **92°59'11.52244"**

Mapping Angle: **0°20'18"** Combination Scale Factor: **0.99993401**

Monument Type: Cast in-place concrete monument with aluminum disk.



This document was prepared by GBC and DCI for use by Jasper County, Iowa.