

Jasper County, Iowa
Iowa South Zone (1402)
Horiz. Datum: NAD83(1996)
Vert. Datum: NAVD 1988
US Survey Feet
2005

Point Name: **R03**

Designation: Jasper County GPS Monument R03-2005

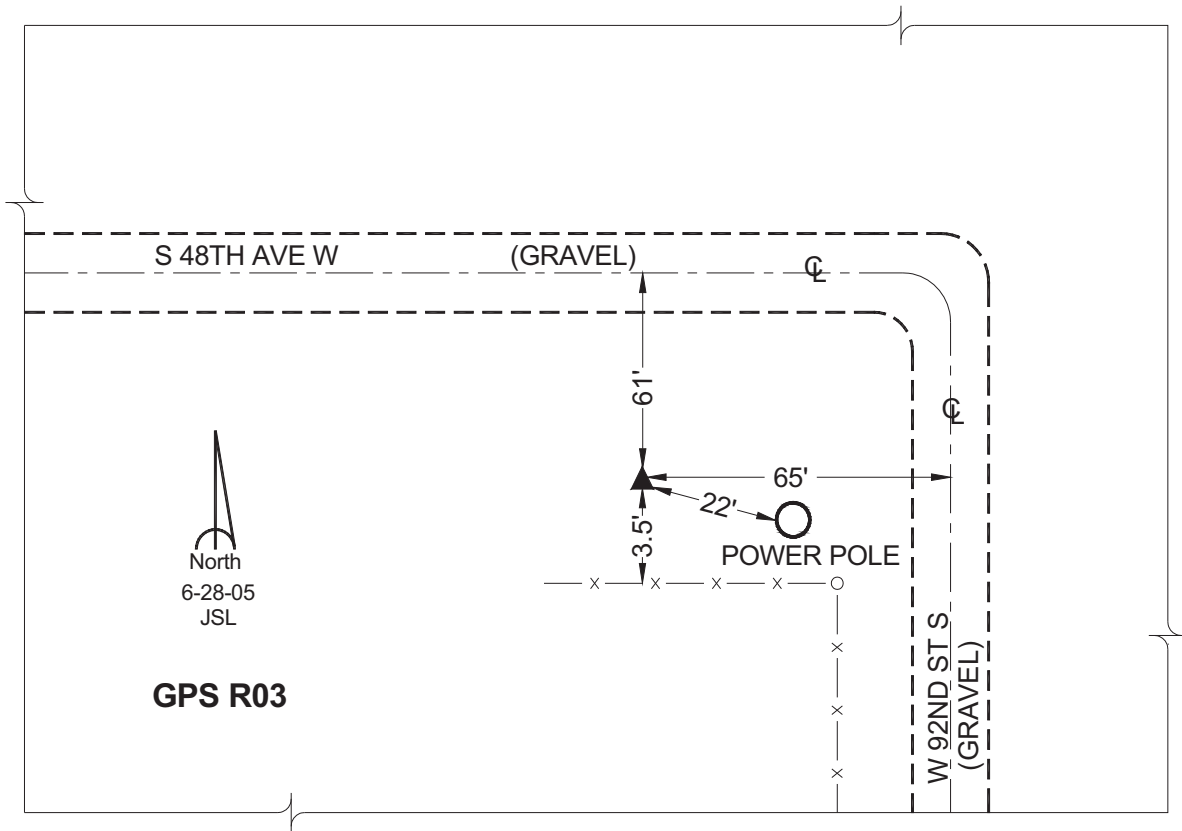
Northing: **565620.67sft** Easting: **1763724.54sft**

Orthometric Height: **759.49sft** Ellipsoid Height: **654.51sft** **Geoid03**

Latitude: **41°33'05.71550"** Longitude: **93°02'58.17567"**

Mapping Angle: **0°17'48"** Combination Scale Factor: **0.99993584**

Monument Type: Cast in-place concrete monument with aluminum disk.



This document was prepared by GBC and DCI for use by Jasper County, Iowa.