

Jasper County, Iowa
Iowa South Zone (1402)
Horiz. Datum: NAD83(1996)
Vert. Datum: NAVD 1988
US Survey Feet
2005

Point Name: **R04**

Designation: Jasper County GPS Monument R04-2005

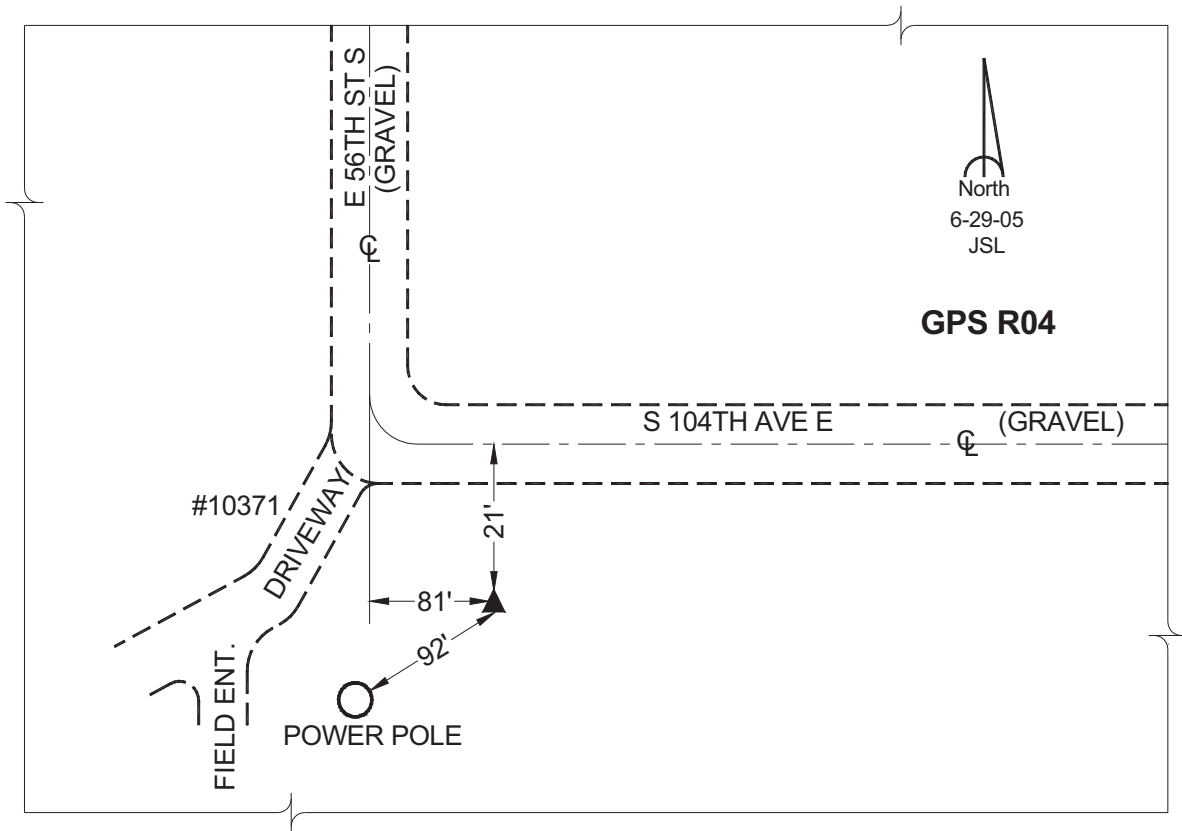
Northing: **565742.60sft** Easting: **1781060.58sft**

Orthometric Height: **757.09sft** Ellipsoid Height: **651.98sft** **Geoid03**

Latitude: **41°33'05.97075"** Longitude: **92°59'10.15652"**

Mapping Angle: **0°20'18"** Combination Scale Factor: **0.99993596**

Monument Type: Cast in-place concrete monument with aluminum disk.



This document was prepared by GBC and DCI for use by Jasper County, Iowa.