

Jasper County, Iowa
Iowa South Zone (1402)
Horiz. Datum: NAD83(1996)
Vert. Datum: NAVD 1988
US Survey Feet
2005

Point Name: **R05**

Designation: Jasper County GPS Monument R05-2005

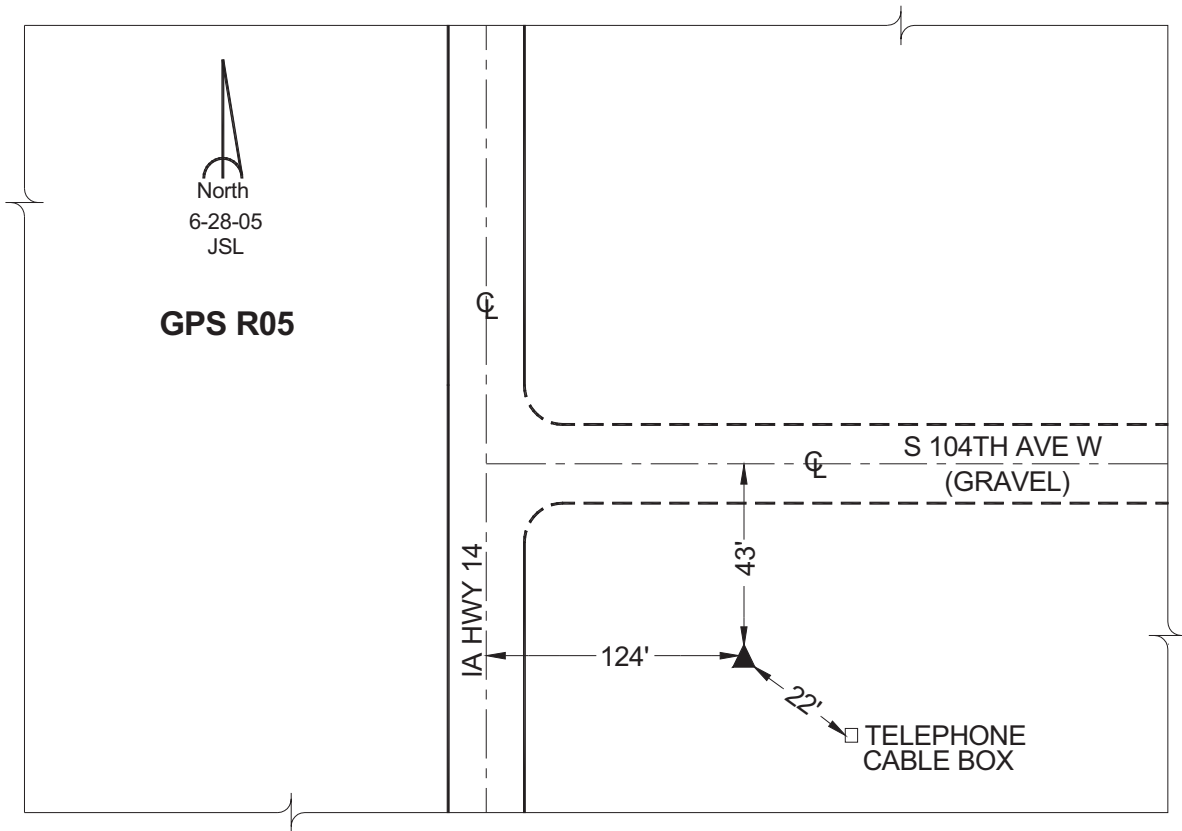
Northing: **565606.72sft** Easting: **1750828.29sft**

Orthometric Height: **907.53sft** Ellipsoid Height: **802.68sft** **Geoid03**

Latitude: **41°33'06.20311"** Longitude: **93°05'47.79381"**

Mapping Angle: **0°15'57"** Combination Scale Factor: **0.99992878**

Monument Type: Cast in-place concrete monument with aluminum disk.



This document was prepared by GBC and DCI for use by Jasper County, Iowa.