

Jasper County, Iowa
Iowa South Zone (1402)
Horiz. Datum: NAD83(1996)
Vert. Datum: NAVD 1988
US Survey Feet
2005

Point Name: **R06**

Designation: Jasper County GPS Monument R06-2005

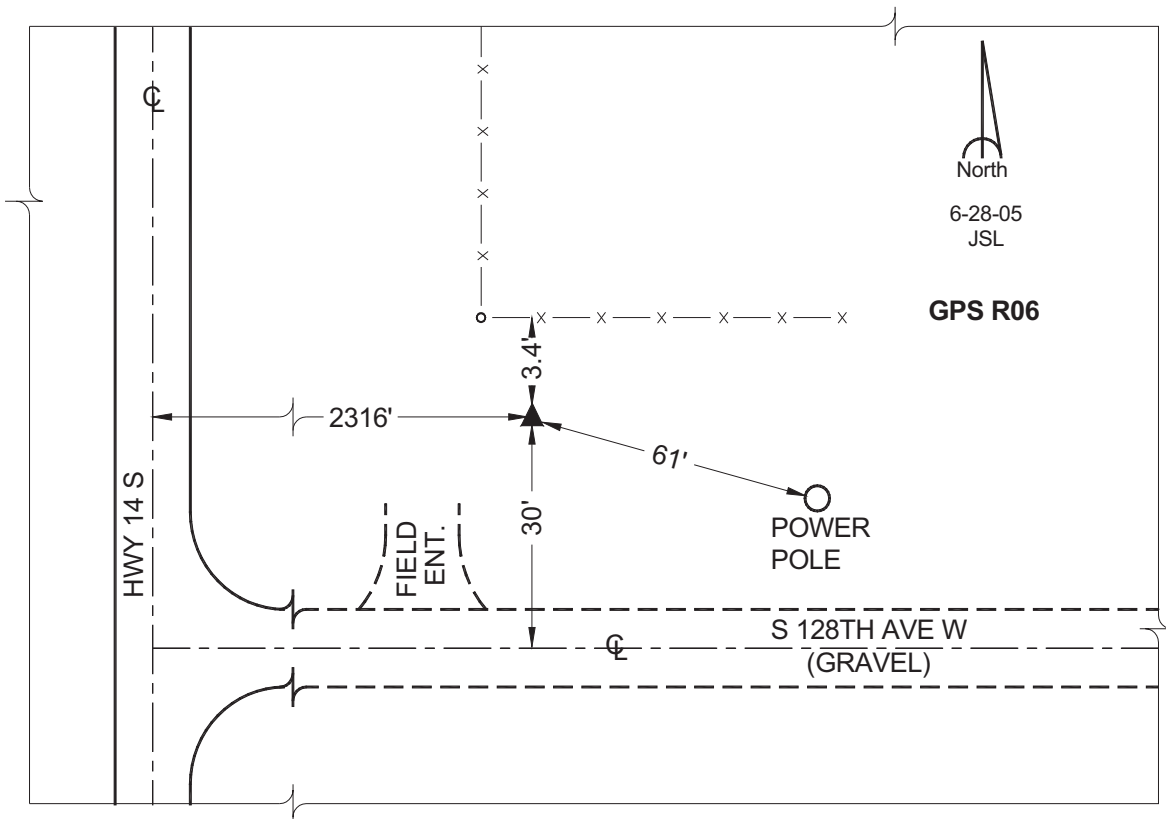
Northing: **549819.14sft** Easting: **1752028.59sft**

Orthometric Height: **905.04sft** Ellipsoid Height: **800.14sft** **Geoid03**

Latitude: **41°30'30.16727"** Longitude: **93°05'32.97969"**

Mapping Angle: **0°16'06"** Combination Scale Factor: **0.99992456**

Monument Type: Cast in-place concrete monument with aluminum disk.



This document was prepared by GBC and DCI for use by Jasper County, Iowa.